



SIEMENS Gamesa

BLADE INSPECTION REPORT



SAINTE ROSE

VALOREM

JUNE 2023





SIEMENS Gamesa

RENEWABLE ENERGY

BLADE INSPECTION REPORT



VALOREM

Sainte Rose T1

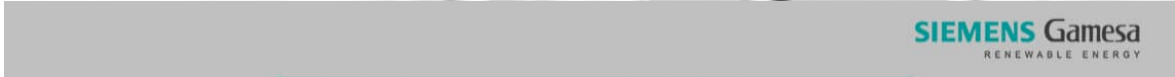
SIEMENS Gamesa Renewable Energy

GLOBAL OPERATIONS

Avda. Ciudad de la Innovación 2,
31621 Sarriguren (Navarra) - Spain

Ref.: INOMG-PL-REP-001-ES

Date: 05/11/2023



GLOBAL OPERATIONS

WIND FARM:	Sainte Rose
WTG:	T1
FL:	WF-FR-971-1766-Y1-A-001
CLIENT:	VALOREM
WO N°	
SC	France
SC RESPONSIBLE	Engerran Sebastien
SUPERVISOR	Lakhdar Djebbara Walid



1. DATA

1.1 WIND TURBINE DATA

WIND FARM	Sainte Rose
WTG N°	T1
WTG MODEL	G 90
CLIENT	VALOREM
COUNTRY	France
SERVICE CENTRE	France
PRODUCTION (kWh)	
LINE HOURS OK	
WTG HOURS OK	

1.2 INTERVENTION DATA

CRANE COMPANY	
START DATE	05/06/2023
END DATE	05/06/2023

	TECHNICIAN	CODE	COMPANY	CODE
1	Lakhdar Djebbara Walid	501928	SGRE	4
2			-	-
3			-	-
4			-	-

1.3 BLADE IDENTIFICATION

BLADE A

BLADE N°	1135440P-53
BLADE WEIGHT (kg)	7261
MANUFACTURER	LM
BLADE FINISHED	YES

INTERVENTION TYPE

GROUND

BLADE B

BLADE N°	001139-440P-53
BLADE WEIGHT (kg)	7249
MANUFACTURER	LM
BLADE FINISHED	YES

INTERVENTION TYPE

GROUND

BLADE C

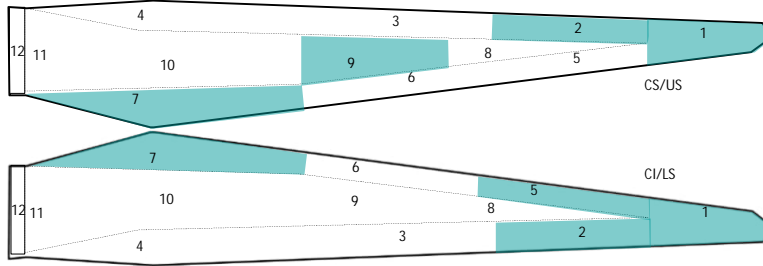
BLADE N°	001137 44.0P 53
BLADE WEIGHT (kg)	7240
MANUFACTURER	LM
BLADE FINISHED	YES

INTERVENTION TYPE

GROUND

2.DAMAGE IDENTIFICATION AND EVALUATION
BLADE A

DAMAGE N°	CODE	POSITION (mm)		DISTANCE (mm)				DESCRIPTION	WORK TO DO	BREAK CAUSE
		ZONE	SHELL	ROOT	LE	LENGTH	TRANS			
01	2.01	7	US/LS	5000	3500	3000	10	TRAILING EDGE PITTING	SAND, PAINT AND POLISH	WEAR & TEAR
02	4.08	1	LS	43700	20	10	10	DIRTINESS	CLEAN	WEAR & TEAR
03	4.08	5	LS	35000	100	50	50	DIRTINESS	CLEAN	WEAR & TEAR
04	4.08	9	LS	2000	50	10	10	DIRTINESS	CLEAN	WEAR & TEAR
05	4.08	1	US/LS	43000	0	10	20	DIRTINESS	CLEAN	WEAR & TEAR
06	4.08	1	US/LS	40000	0	50	50	DIRTINESS	CLEAN	WEAR & TEAR
07	4.08	2	US/LS	34000	0	1000	200	DIRTINESS	CLEAN	WEAR & TEAR

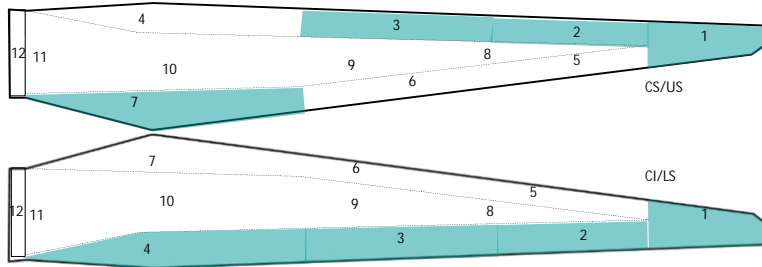


ZONES

- 1 TIP
- 2 TIP LEADING EDGE
- 3 MEDIUM LEADING EDGE
- 4 ROOT LEADING EDGE
- 5 TIP TRAILING EDGE
- 6 MEDIUM TRAILING EDGE
- 7 ROOT TRAILING EDGE
- 8 SPAR AREA TIP
- 9 SPAR AREA MEDIUM
- 10 SPAR AREA ROOT
- 11 ROOT
- 12 INTERIOR ROOT

BLADE B

DAMAGE N°	CODE	POSITION (mm)			DISTANCE (mm)			DESCRIPTION	WORK TO DO	BREAK CAUSE
		ZONE	SHELL	ROOT	LE	LENGTH	TRANS			
01	4.08	1	US/LS	43700	0	50	50	DIRTINESS	CLEAN	WEAR & TEAR
02	4.08	2	US/LS	33000	0	300	200	DIRTINESS	CLEAN	WEAR & TEAR
03	4.08	3	US/LS	20000	0	50	50	DIRTINESS	CLEAN	WEAR & TEAR
04	2.01	7	US/LS	5000	3500	3000	10	TRAILING EDGE PITTING	SAND, PAINT AND POLISH	WEAR & TEAR
05	4.08	1	LS	43700	10	20	20	DIRTINESS	CLEAN	WEAR & TEAR
06	4.08	1	US	43700	10	20	20	DIRTINESS	CLEAN	WEAR & TEAR

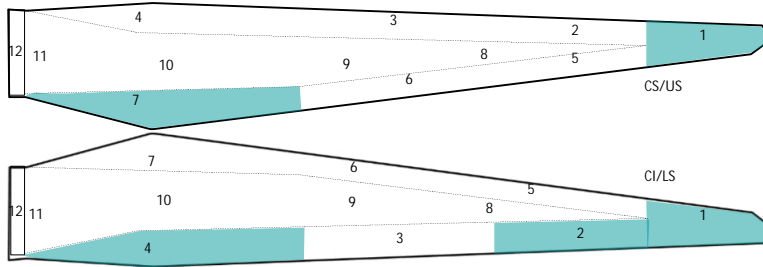


ZONES

- 1 TIP
- 2 TIP LEADING EDGE
- 3 MEDIUM LEADING EDGE
- 4 ROOT LEADING EDGE
- 5 TIP TRAILING EDGE
- 6 MEDIUM TRAILING EDGE
- 7 ROOT TRAILING EDGE
- 8 SPAR AREA TIP
- 9 SPAR AREA MEDIUM
- 10 SPAR AREA ROOT
- 11 ROOT
- 12 INTERIOR ROOT

BLADE C

DAMAGE N°	CODE	POSITION (mm)			DISTANCE (mm)			DESCRIPTION	WORK TO DO	BREAK CAUSE
		ZONE	SHELL	ROOT	LE	LENGTH	TRANS			
01	2.01	7	US/LS	5000	3500	3000	10	TRAILING EDGE PITTING	SAND, PAINT AND POLISH	WEAR & TEAR
02	4.08	1	US/LS	42000	0	50	50	DIRTINESS	CLEAN	WEAR & TEAR
03	4.08	2	US/LS	40000	0	50	50	DIRTINESS	CLEAN	WEAR & TEAR
04	1.03	2	US/LS	35000	0	200	200	3M TAPE BROKEN	REPLACE 3M TAPE	WEAR & TEAR
05	4.08	1	US	43700	200	20	20	DIRTINESS	CLEAN	WEAR & TEAR
06	4.08	1	LS	43700	200	20	20	DIRTINESS	CLEAN	WEAR & TEAR



ZONES

- 1 TIP
- 2 TIP LEADING EDGE
- 3 MEDIUM LEADING EDGE
- 4 ROOT LEADING EDGE
- 5 TIP TRAILING EDGE
- 6 MEDIUM TRAILING EDGE
- 7 ROOT TRAILING EDGE
- 8 SPAR AREA TIP
- 9 SPAR AREA MEDIUM
- 10 SPAR AREA ROOT
- 11 ROOT
- 12 INTERIOR ROOT

3. PHOTOS OF DAMAGES
BLADE A

DAMAGE N°	CODE	POSITION (mm)			DISTANCE (mm)			DESCRIPTION	WORK TO BE DONE	BREAK CAUSE
		ZONE	SHELL	ROOT	LE	LENGTH	TRANS			
01	2.01	7	US/LS	5000	3500	3000	10	TRAILING EDGE PITTING	SAND, PAINT AND POLISH	WEAR & TEAR



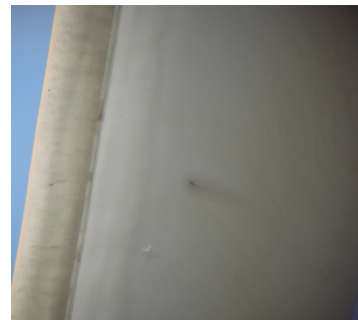
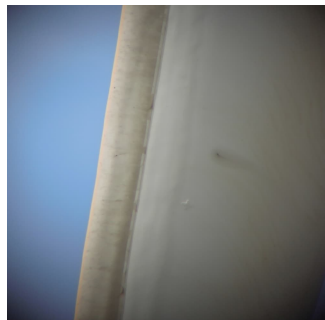
REMARK

DAMAGE N°	CODE	POSITION (mm)			DISTANCE (mm)			DESCRIPTION	WORK TO BE DONE	BREAK CAUSE
		ZONE	SHELL	ROOT	LE	LENGTH	TRANS			
02	4.08	1	LS	43700	20	10	10	DIRTINESS	CLEAN	WEAR & TEAR



REMARK

DAMAGE N°	CODE	POSITION (mm)			DISTANCE (mm)			DESCRIPTION	WORK TO BE DONE	BREAK CAUSE
		ZONE	SHELL	ROOT	LE	LENGTH	TRANS			
03	4.08	5	LS	35000	100	50	50	DIRTINESS	CLEAN	WEAR & TEAR



REMARK

3. PHOTOS OF DAMAGES
BLADE A

DAMAGE		POSITION (mm)			DISTANCE (mm)			DESCRIPTION	WORK TO BE DONE	BREAK CAUSE
N°	CODE	ZONE	SHELL	ROOT	LE	LENGTH	TRANS			
04	4.08	9	LS	2000	50	10	10	DIRTINESS	CLEAN	WEAR & TEAR



REMARK

DAMAGE		POSITION (mm)			DISTANCE (mm)			DESCRIPTION	WORK TO BE DONE	BREAK CAUSE
N°	CODE	ZONE	SHELL	ROOT	LE	LENGTH	TRANS			
05	4.08	1	US/LS	43000	0	10	20	DIRTINESS	CLEAN	WEAR & TEAR



REMARK

DAMAGE		POSITION (mm)			DISTANCE (mm)			DESCRIPTION	WORK TO BE DONE	BREAK CAUSE
N°	CODE	ZONE	SHELL	ROOT	LE	LENGTH	TRANS			
06	4.08	1	US/LS	40000	0	50	50	DIRTINESS	CLEAN	WEAR & TEAR



REMARK

3. PHOTOS OF DAMAGES
BLADE A

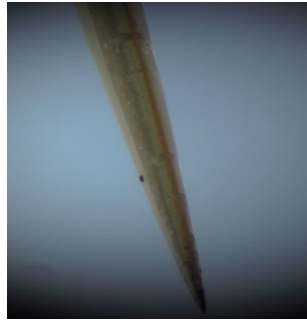
DAMAGE		POSITION (mm)			DISTANCE (mm)			DESCRIPTION	WORK TO BE DONE	BREAK CAUSE
N°	CODE	ZONE	SHELL	ROOT	LE	LENGTH	TRANS			
07	4.08	2	US/LS	34000	0	1000	200	DIRTINESS	CLEAN	WEAR & TEAR



REMARK

BLADE B

DAMAGE		POSITION (mm)			DISTANCE (mm)			DESCRIPTION	WORK TO BE DONE	BREAK CAUSE
N°	CODE	ZONE	SHELL	ROOT	LE	LENGTH	TRANS			
01	4.08	1	US/LS	43700	0	50	50	DIRTINESS	CLEAN	WEAR & TEAR



REMARK

DAMAGE		POSITION (mm)			DISTANCE (mm)			DESCRIPTION	WORK TO BE DONE	BREAK CAUSE
N°	CODE	ZONE	SHELL	ROOT	LE	LENGTH	TRANS			
02	4.08	2	US/LS	33000	0	300	200	DIRTINESS	CLEAN	WEAR & TEAR



REMARK

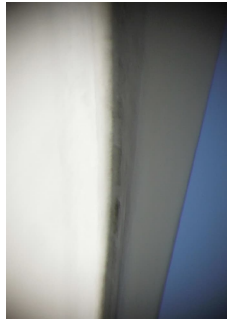
DAMAGE		POSITION (mm)			DISTANCE (mm)			DESCRIPTION	WORK TO BE DONE	BREAK CAUSE
N°	CODE	ZONE	SHELL	ROOT	LE	LENGTH	TRANS			
03	4.08	3	US/LS	20000	0	50	50	DIRTINESS	CLEAN	WEAR & TEAR



REMARK

BLADE B

DAMAGE		POSITION (mm)			DISTANCE (mm)			DESCRIPTION	WORK TO BE DONE	BREAK CAUSE
N°	CODE	ZONE	SHELL	ROOT	LE	LENGTH	TRANS			
04	2.01	7	US/LS	5000	3500	3000	10	TRAILING EDGE PITTING	SAND, PAINT AND POLISH	WEAR & TEAR



REMARK

DAMAGE		POSITION (mm)			DISTANCE (mm)			DESCRIPTION	WORK TO BE DONE	BREAK CAUSE
N°	CODE	ZONE	SHELL	ROOT	LE	LENGTH	TRANS			
05	4.08	1	LS	43700	10	20	20	DIRTINESS	CLEAN	WEAR & TEAR



REMARK

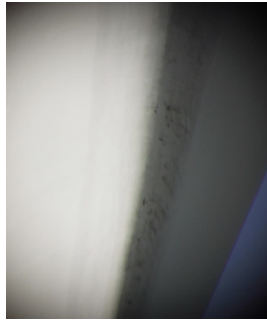
DAMAGE		POSITION (mm)			DISTANCE (mm)			DESCRIPTION	WORK TO BE DONE	BREAK CAUSE
N°	CODE	ZONE	SHELL	ROOT	LE	LENGTH	TRANS			
06	4.08	1	US	43700	10	20	20	DIRTINESS	CLEAN	WEAR & TEAR



REMARK

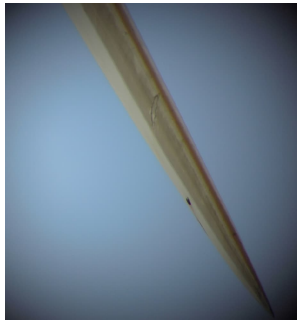
BLADE C

DAMAGE		POSITION (mm)			DISTANCE (mm)			DESCRIPTION	WORK TO BE DONE	BREAK CAUSE
N°	CODE	ZONE	SHELL	ROOT	LE	LENGTH	TRANS			
01	2.01	7	US/LS	5000	3500	3000	10	TRAILING EDGE PITTING	SAND, PAINT AND POLISH	WEAR & TEAR



REMARK

DAMAGE		POSITION (mm)			DISTANCE (mm)			DESCRIPTION	WORK TO BE DONE	BREAK CAUSE
N°	CODE	ZONE	SHELL	ROOT	LE	LENGTH	TRANS			
02	4.08	1	US/LS	42000	0	50	50	DIRTINESS	CLEAN	WEAR & TEAR



REMARK

DAMAGE		POSITION (mm)			DISTANCE (mm)			DESCRIPTION	WORK TO BE DONE	BREAK CAUSE
N°	CODE	ZONE	SHELL	ROOT	LE	LENGTH	TRANS			
03	4.08	2	US/LS	40000	0	50	50	DIRTINESS	CLEAN	WEAR & TEAR



REMARK

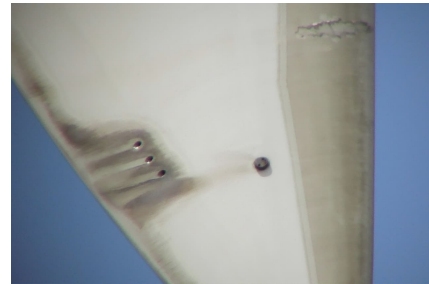
BLADE C

DAMAGE		POSITION (mm)			DISTANCE (mm)			DESCRIPTION	WORK TO BE DONE	BREAK CAUSE
N°	CODE	ZONE	SHELL	ROOT	LE	LENGTH	TRANS			
04	1.03	2	US/LS	35000	0	200	200	3M TAPE BROKEN	REPLACE 3M TAPE	WEAR & TEAR



REMARK

DAMAGE		POSITION (mm)			DISTANCE (mm)			DESCRIPTION	WORK TO BE DONE	BREAK CAUSE
N°	CODE	ZONE	SHELL	ROOT	LE	LENGTH	TRANS			
05	4.08	1	US	43700	200	20	20	DIRTINESS	CLEAN	WEAR & TEAR



REMARK

DAMAGE		POSITION (mm)			DISTANCE (mm)			DESCRIPTION	WORK TO BE DONE	BREAK CAUSE
N°	CODE	ZONE	SHELL	ROOT	LE	LENGTH	TRANS			
06	4.08	1	LS	43700	200	20	20	DIRTINESS	CLEAN	WEAR & TEAR



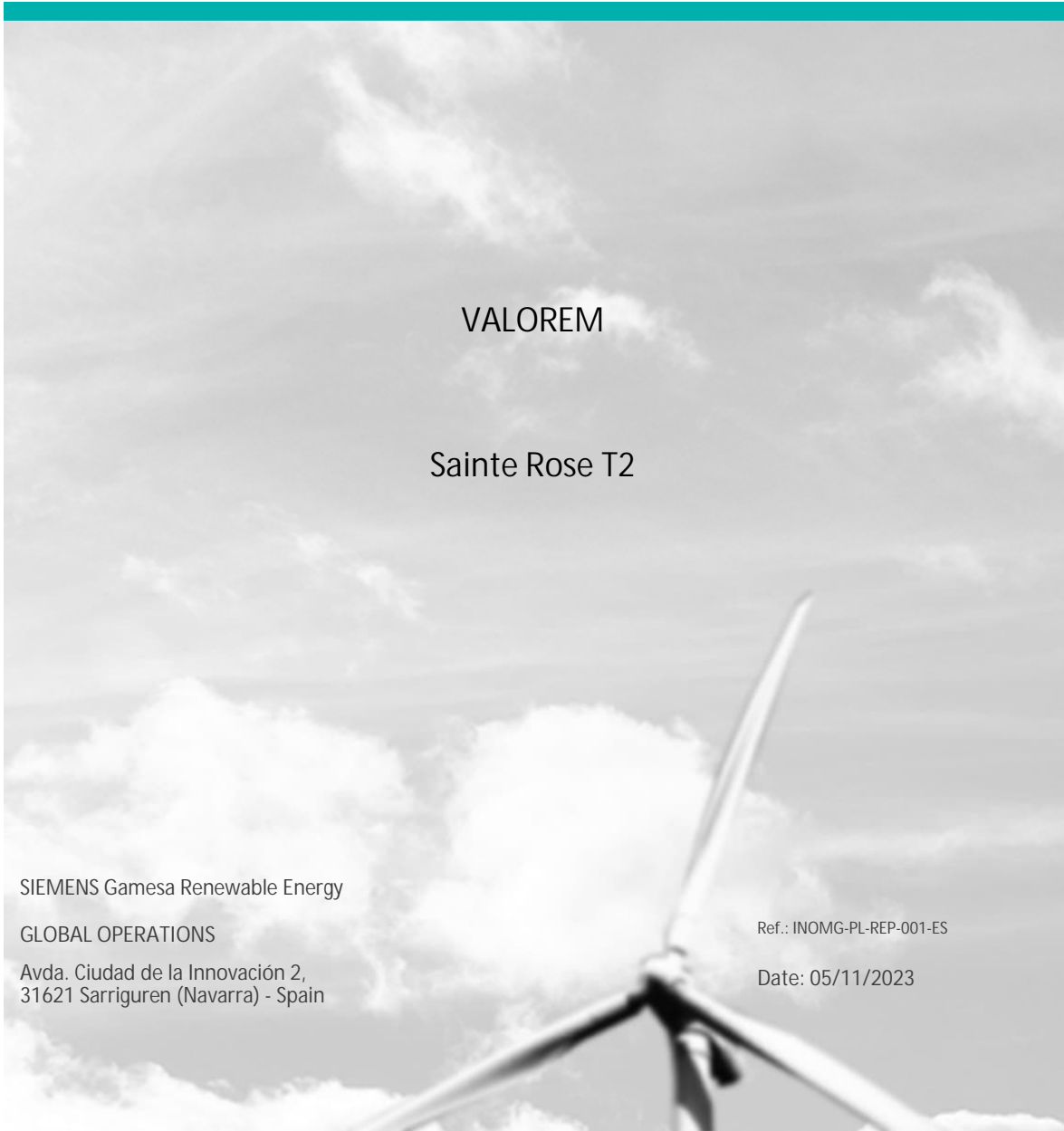
REMARK



SIEMENS Gamesa

RENEWABLE ENERGY

BLADE INSPECTION REPORT



VALOREM

Sainte Rose T2

SIEMENS Gamesa Renewable Energy

GLOBAL OPERATIONS

Avda. Ciudad de la Innovación 2,
31621 Sarriguren (Navarra) - Spain

Ref.: INOMG-PL-REP-001-ES

Date: 05/11/2023

WIND FARM:	Sainte Rose
WTG:	T2
FL:	WF-FR-9711-1766-Y1-A-002
CLIENT:	VALOREM
WO N°	
SC	France
SC RESPONSIBLE	SEBASTIEN ENGERRAN
SUPERVISOR	WALID LAKHDAR DJEBBARA



1. DATA

1.1 WIND TURBINE DATA

WIND FARM	Sainte Rose
WTG N°	T2
WTG MODEL	G 90
CLIENT	VALOREM
COUNTRY	
SERVICE CENTRE	France
PRODUCTION (kWh)	
LINE HOURS OK	
WTG HOURS OK	

1.2 INTERVENTION DATA

CRANE COMPANY	
START DATE	05/06/2023
END DATE	05/06/2023

	TECHNICIAN	CODE	COMPANY	CODE
1	WALID LAKHDAR DJEBBARA	501928	SGRE	4
2			-	-
3			-	-
4			-	-

1.3 BLADE IDENTIFICATION

BLADE A

BLADE N°	001140-44.0P-53
BLADE WEIGHT (kg)	7225
MANUFACTURER	LM
BLADE FINISHED	YES

INTERVENTION TYPE

GROUND

BLADE B

BLADE N°	001142-44.0P-53
BLADE WEIGHT (kg)	7226
MANUFACTURER	LM
BLADE FINISHED	YES

INTERVENTION TYPE

GROUND

BLADE C

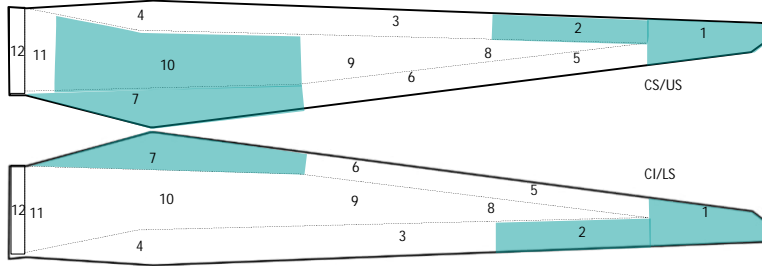
BLADE N°	001141-44.0P-53
BLADE WEIGHT (kg)	7231
MANUFACTURER	LM
BLADE FINISHED	YES

INTERVENTION TYPE

GROUND

2.DAMAGE IDENTIFICATION AND EVALUATION
BLADE A

DAMAGE N°	CODE	POSITION (mm)		DISTANCE (mm)			DESCRIPTION	WORK TO DO	BREAK CAUSE	
		ZONE	SHELL	ROOT	LE	LENGTH				TRANS
01	1.03	1	US/LS	42700	0	30	10	3M TAPE BROKEN	REPLACE 3M TAPE	WEAR & TEAR
02	1.03	2	US/LS	36500	0	85	85	3M TAPE BROKEN	REPLACE 3M TAPE	WEAR & TEAR
03	1.03	2	US/LS	36800	0	85	85	3M TAPE BROKEN	REPLACE 3M TAPE	WEAR & TEAR
04	4.08	1	US	43700	50	70	10	DIRTINESS	CLEAN	WEAR & TEAR
05	4.08	10	US	6000	50	20	20	DIRTINESS	CLEAN	WEAR & TEAR
06	4.08	1	LS	43700	50	70	10	DIRTINESS	CLEAN	WEAR & TEAR
07	2.01	7	US/LS	5000	3500	3000	10	TRAILING EDGE PITTING	SAND, PAINT AND POLISH	WEAR & TEAR

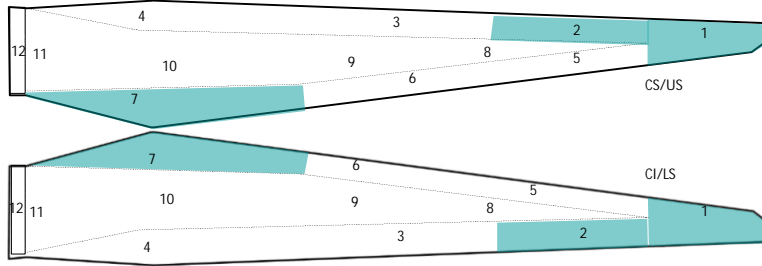


ZONES

- 1 TIP
- 2 TIP LEADING EDGE
- 3 MEDIUM LEADING EDGE
- 4 ROOT LEADING EDGE
- 5 TIP TRAILING EDGE
- 6 MEDIUM TRAILING EDGE
- 7 ROOT TRAILING EDGE
- 8 SPAR AREA TIP
- 9 SPAR AREA MEDIUM
- 10 SPAR AREA ROOT
- 11 ROOT
- 12 INTERIOR ROOT

BLADE B

DAMAGE N°	CODE	POSITION (mm)		DISTANCE (mm)			DESCRIPTION	WORK TO DO	BREAK CAUSE	
		ZONE	SHELL	ROOT	LE	LENGTH				TRANS
01	1.03	1	US/LS	43000	0	50	100	3M TAPE BROKEN	REPLACE 3M TAPE	WEAR & TEAR
02	1.03	2	US/LS	40000	0	50	100	3M TAPE BROKEN	REPLACE 3M TAPE	WEAR & TEAR
03	1.03	2	US/LS	36000	0	40	40	3M TAPE BROKEN	REPLACE 3M TAPE	WEAR & TEAR
04	4.08	1	US	43700	50	50	100	DIRTINESS	CLEAN	WEAR & TEAR
05	4.08	1	LS	43700	50	50	10	DIRTINESS	CLEAN	WEAR & TEAR
06	4.08	2	LS	40000	150	10	10	DIRTINESS	CLEAN	WEAR & TEAR
07	2.01	7	US/LS	5000	3500	3000	10	TRAILING EDGE PITTING	SAND, PAINT AND POLISH	WEAR & TEAR

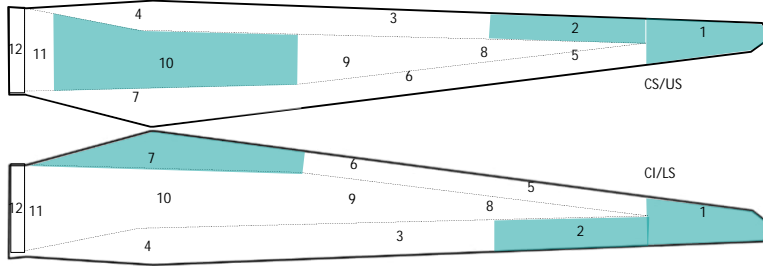


ZONES

- 1 TIP
- 2 TIP LEADING EDGE
- 3 MEDIUM LEADING EDGE
- 4 ROOT LEADING EDGE
- 5 TIP TRAILING EDGE
- 6 MEDIUM TRAILING EDGE
- 7 ROOT TRAILING EDGE
- 8 SPAR AREA TIP
- 9 SPAR AREA MEDIUM
- 10 SPAR AREA ROOT
- 11 ROOT
- 12 INTERIOR ROOT

BLADE C

DAMAGE N°	CODE	POSITION (mm)		DISTANCE (mm)			DESCRIPTION	WORK TO DO	BREAK CAUSE	
		ZONE	SHELL	ROOT	LE	LENGTH				TRANS
01	4.08	1	US/LS	42000	0	20	20	DIRTINESS	CLEAN	WEAR & TEAR
02	4.08	2	US/LS	40000	0	20	20	DIRTINESS	CLEAN	WEAR & TEAR
03	1.04	1	US/LS	43000	0	50	50	CRACK IN LEADING EDGE BONDED UNION	SAND, BOND, LAMINATE, PAINT AND POLISH	WEAR & TEAR
04	4.08	11	US	100	800	500	500	DIRTINESS	CLEAN	WEAR & TEAR
05	4.08	10	US	5000	2000	40	300	DIRTINESS	CLEAN	WEAR & TEAR
06	4.08	10	LS	7000	300	300	50	DIRTINESS	CLEAN	WEAR & TEAR
07	2.01	7	US/LS	5000	3500	3000	10	TRAILING EDGE PITTING	SAND, PAINT AND POLISH	WEAR & TEAR



ZONES

- 1 TIP
- 2 TIP LEADING EDGE
- 3 MEDIUM LEADING EDGE
- 4 ROOT LEADING EDGE
- 5 TIP TRAILING EDGE
- 6 MEDIUM TRAILING EDGE
- 7 ROOT TRAILING EDGE
- 8 SPAR AREA TIP
- 9 SPAR AREA MEDIUM
- 10 SPAR AREA ROOT
- 11 ROOT
- 12 INTERIOR ROOT

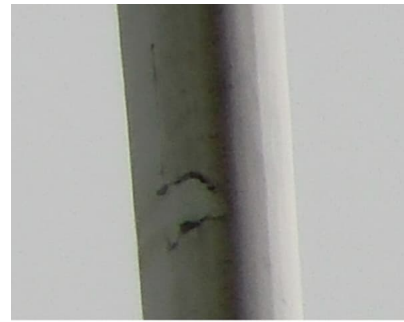
3. PHOTOS OF DAMAGES
BLADE A

DAMAGE N°	CODE	POSITION (mm)			DISTANCE (mm)			DESCRIPTION	WORK TO BE DONE	BREAK CAUSE
		ZONE	SHELL	ROOT	LE	LENGTH	TRANS			
01	1.03	1	US/LS	42700	0	30	10	3M TAPE BROKEN	REPLACE 3M TAPE	WEAR & TEAR



REMARK

DAMAGE N°	CODE	POSITION (mm)			DISTANCE (mm)			DESCRIPTION	WORK TO BE DONE	BREAK CAUSE
		ZONE	SHELL	ROOT	LE	LENGTH	TRANS			
02	1.03	2	US/LS	36500	0	85	85	3M TAPE BROKEN	REPLACE 3M TAPE	WEAR & TEAR



REMARK

DAMAGE N°	CODE	POSITION (mm)			DISTANCE (mm)			DESCRIPTION	WORK TO BE DONE	BREAK CAUSE
		ZONE	SHELL	ROOT	LE	LENGTH	TRANS			
03	1.03	2	US/LS	36800	0	85	85	3M TAPE BROKEN	REPLACE 3M TAPE	WEAR & TEAR



REMARK

3. PHOTOS OF DAMAGES
BLADE A

DAMAGE N°	CODE	POSITION (mm)			DISTANCE (mm)			DESCRIPTION	WORK TO BE DONE	BREAK CAUSE
		ZONE	SHELL	ROOT	LE	LENGTH	TRANS			
04	4.08	1	US	43700	50	70	10	DIRTINESS	CLEAN	WEAR & TEAR



REMARK

DAMAGE N°	CODE	POSITION (mm)			DISTANCE (mm)			DESCRIPTION	WORK TO BE DONE	BREAK CAUSE
		ZONE	SHELL	ROOT	LE	LENGTH	TRANS			
05	4.08	10	US	6000	50	20	20	DIRTINESS	CLEAN	WEAR & TEAR



REMARK

DAMAGE N°	CODE	POSITION (mm)			DISTANCE (mm)			DESCRIPTION	WORK TO BE DONE	BREAK CAUSE
		ZONE	SHELL	ROOT	LE	LENGTH	TRANS			
06	4.08	1	LS	43700	50	70	10	DIRTINESS	CLEAN	WEAR & TEAR



REMARK

3. PHOTOS OF DAMAGES
BLADE A

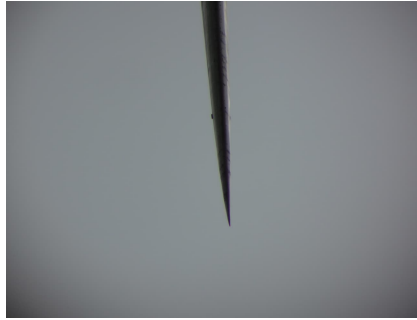
DAMAGE		POSITION (mm)			DISTANCE (mm)			DESCRIPTION	WORK TO BE DONE	BREAK CAUSE
N°	CODE	ZONE	SHELL	ROOT	LE	LENGTH	TRANS			
07	2.01	7	US/LS	5000	3500	3000	10	TRAILING EDGE PITTING	SAND, PAINT AND POLISH	WEAR & TEAR



REMARK

BLADE B

DAMAGE N°	CODE	POSITION (mm)			DISTANCE (mm)			DESCRIPTION	WORK TO BE DONE	BREAK CAUSE
		ZONE	SHELL	ROOT	LE	LENGTH	TRANS			
01	1.03	1	US/LS	43000	0	50	100	3M TAPE BROKEN	REPLACE 3M TAPE	WEAR & TEAR



REMARK

DAMAGE N°	CODE	POSITION (mm)			DISTANCE (mm)			DESCRIPTION	WORK TO BE DONE	BREAK CAUSE
		ZONE	SHELL	ROOT	LE	LENGTH	TRANS			
02	1.03	2	US/LS	40000	0	50	100	3M TAPE BROKEN	REPLACE 3M TAPE	WEAR & TEAR



REMARK

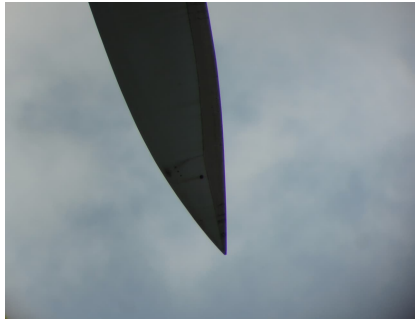
DAMAGE N°	CODE	POSITION (mm)			DISTANCE (mm)			DESCRIPTION	WORK TO BE DONE	BREAK CAUSE
		ZONE	SHELL	ROOT	LE	LENGTH	TRANS			
03	1.03	2	US/LS	36000	0	40	40	3M TAPE BROKEN	REPLACE 3M TAPE	WEAR & TEAR



REMARK

BLADE B

DAMAGE		POSITION (mm)			DISTANCE (mm)			DESCRIPTION	WORK TO BE DONE	BREAK CAUSE
N°	CODE	ZONE	SHELL	ROOT	LE	LENGTH	TRANS			
04	4.08	1	US	43700	50	50	100	DIRTINESS	CLEAN	WEAR & TEAR



REMARK

DAMAGE		POSITION (mm)			DISTANCE (mm)			DESCRIPTION	WORK TO BE DONE	BREAK CAUSE
N°	CODE	ZONE	SHELL	ROOT	LE	LENGTH	TRANS			
05	4.08	1	LS	43700	50	50	10	DIRTINESS	CLEAN	WEAR & TEAR



REMARK

DAMAGE		POSITION (mm)			DISTANCE (mm)			DESCRIPTION	WORK TO BE DONE	BREAK CAUSE
N°	CODE	ZONE	SHELL	ROOT	LE	LENGTH	TRANS			
06	4.08	2	LS	40000	150	10	10	DIRTINESS	CLEAN	WEAR & TEAR



REMARK

BLADE B

DAMAGE		POSITION (mm)			DISTANCE (mm)			DESCRIPTION	WORK TO BE DONE	BREAK CAUSE
N°	CODE	ZONE	SHELL	ROOT	LE	LENGTH	TRANS			
07	2.01	7	US/LS	5000	3500	3000	10	TRAILING EDGE PITTING	SAND, PAINT AND POLISH	WEAR & TEAR



REMARK

BLADE C

DAMAGE		POSITION (mm)			DISTANCE (mm)			DESCRIPTION	WORK TO BE DONE	BREAK CAUSE
N°	CODE	ZONE	SHELL	ROOT	LE	LENGTH	TRANS			
01	4.08	1	US/LS	42000	0	20	20	DIRTINESS	CLEAN	WEAR & TEAR



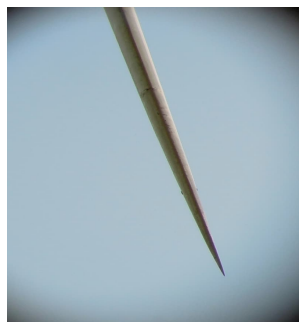
REMARK

DAMAGE		POSITION (mm)			DISTANCE (mm)			DESCRIPTION	WORK TO BE DONE	BREAK CAUSE
N°	CODE	ZONE	SHELL	ROOT	LE	LENGTH	TRANS			
02	4.08	2	US/LS	40000	0	20	20	DIRTINESS	CLEAN	WEAR & TEAR



REMARK

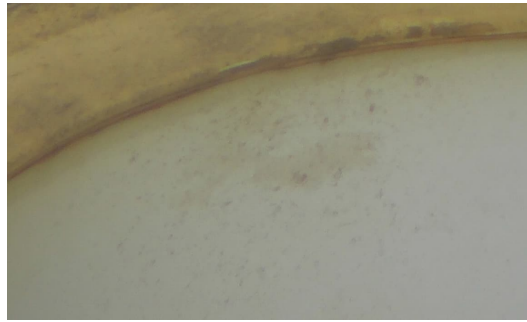
DAMAGE		POSITION (mm)			DISTANCE (mm)			DESCRIPTION	WORK TO BE DONE	BREAK CAUSE
N°	CODE	ZONE	SHELL	ROOT	LE	LENGTH	TRANS			
03	1.04	1	US/LS	43000	0	50	50	CRACK IN LEADING EDGE BONDED UNION	SAND, BOND, LAMINATE, PAINT AND POLISH	WEAR & TEAR



REMARK

BLADE C

DAMAGE		POSITION (mm)			DISTANCE (mm)			DESCRIPTION	WORK TO BE DONE	BREAK CAUSE
N°	CODE	ZONE	SHELL	ROOT	LE	LENGTH	TRANS			
04	4.08	11	US	100	800	500	500	DIRTINESS	CLEAN	WEAR & TEAR



REMARK

DAMAGE		POSITION (mm)			DISTANCE (mm)			DESCRIPTION	WORK TO BE DONE	BREAK CAUSE
N°	CODE	ZONE	SHELL	ROOT	LE	LENGTH	TRANS			
05	4.08	10	US	5000	2000	40	300	DIRTINESS	CLEAN	WEAR & TEAR



REMARK

DAMAGE		POSITION (mm)			DISTANCE (mm)			DESCRIPTION	WORK TO BE DONE	BREAK CAUSE
N°	CODE	ZONE	SHELL	ROOT	LE	LENGTH	TRANS			
06	4.08	10	LS	7000	300	300	50	DIRTINESS	CLEAN	WEAR & TEAR



REMARK

BLADE C

DAMAGE		POSITION (mm)			DISTANCE (mm)			DESCRIPTION	WORK TO BE DONE	BREAK CAUSE
N°	CODE	ZONE	SHELL	ROOT	LE	LENGTH	TRANS			
07	2.01	7	US/LS	5000	3500	3000	10	TRAILING EDGE PITTING	SAND, PAINT AND POLISH	WEAR & TEAR



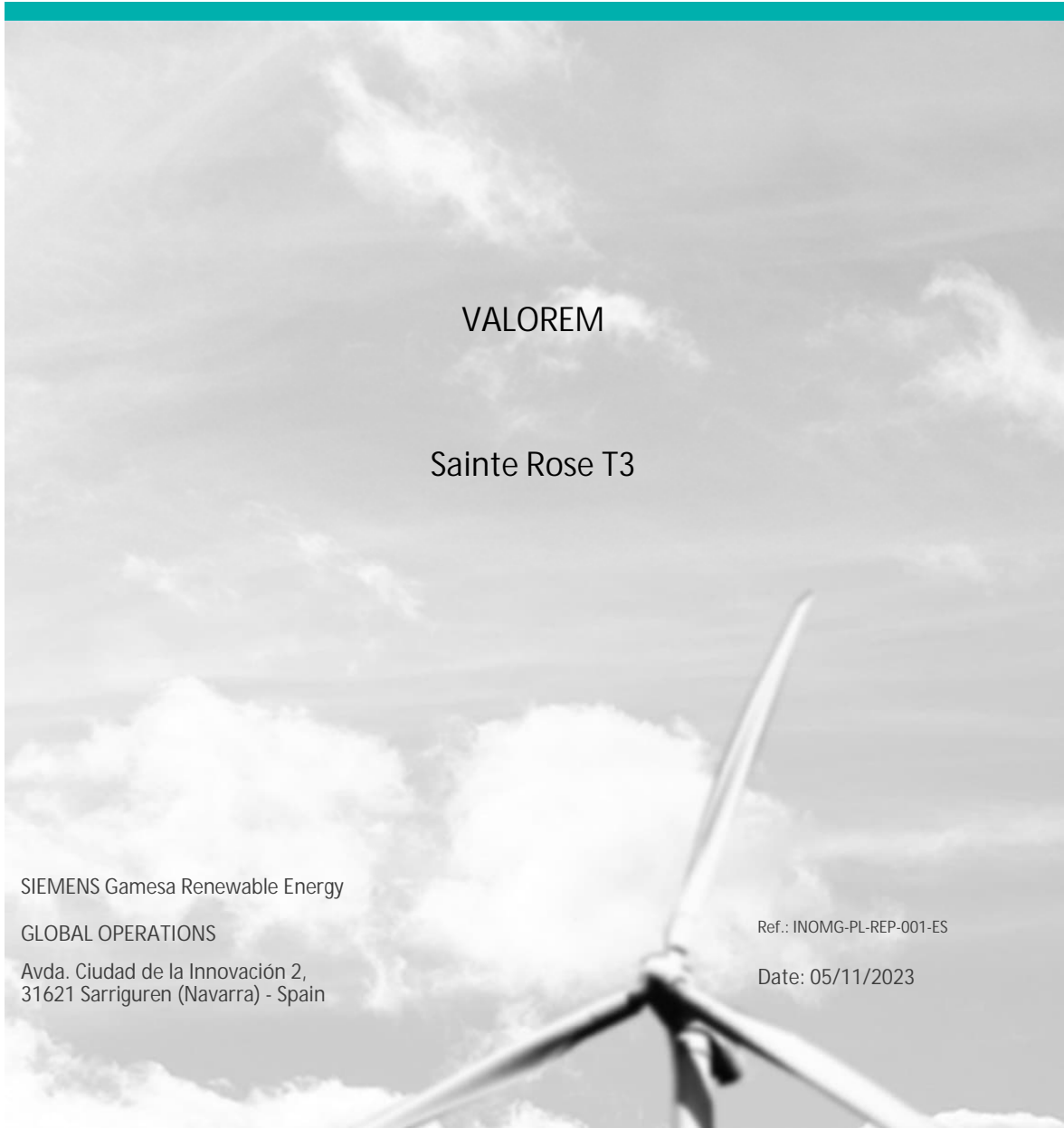
REMARK



SIEMENS Gamesa

RENEWABLE ENERGY

BLADE INSPECTION REPORT



VALOREM

Sainte Rose T3

SIEMENS Gamesa Renewable Energy

GLOBAL OPERATIONS

Avda. Ciudad de la Innovación 2,
31621 Sarriguren (Navarra) - Spain

Ref.: INOMG-PL-REP-001-ES

Date: 05/11/2023



WIND FARM:	Sainte Rose
WTG:	T3
FL:	WF-FR-971-1766-Y1-A-003
CLIENT:	VALOREM
WO N°	
SC	France
SC RESPONSIBLE	SEBASTIEN ENGERRAN
SUPERVISOR	WALID LAKHDAR DJEBBARA



1. DATA

1.1 WIND TURBINE DATA

WIND FARM	Sainte Rose
WTG N°	T3
WTG MODEL	G 90
CLIENT	VALOREM
COUNTRY	
SERVICE CENTRE	France
PRODUCTION (kWh)	
LINE HOURS OK	
WTG HOURS OK	

1.2 INTERVENTION DATA

CRANE COMPANY	
START DATE	07/06/2023
END DATE	07/06/2023

	TECHNICIAN	CODE	COMPANY	CODE
1	WALID LAKHDAR DJEBBARA	501928	SGRE	4
2			-	-
3			-	-
4			-	-

1.3 BLADE IDENTIFICATION

BLADE A

BLADE N°	1146-44.OP-53
BLADE WEIGHT (kg)	7178
MANUFACTURER	LM
BLADE FINISHED	YES

INTERVENTION TYPE

GROUND

BLADE B

BLADE N°	1148-44.OP-53
BLADE WEIGHT (kg)	7270
MANUFACTURER	LM
BLADE FINISHED	YES

INTERVENTION TYPE

GROUND

BLADE C

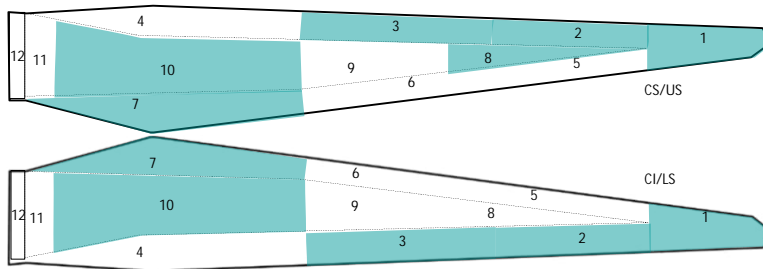
BLADE N°	1149-44.OP-53
BLADE WEIGHT (kg)	7207
MANUFACTURER	LM
BLADE FINISHED	YES

INTERVENTION TYPE

GROUND

2.DAMAGE IDENTIFICATION AND EVALUATION
BLADE A

DAMAGE N°	CODE	POSITION (mm)		DISTANCE (mm)			DESCRIPTION	WORK TO DO	BREAK CAUSE	
		ZONE	SHELL	ROOT	LE	LENGTH				TRANS
01	1.03	1	US/LS	43000	0	10	10	3M TAPE BROKEN	REPLACE 3M TAPE	WEAR & TEAR
02	1.03	2	US/LS	34000	0	10	10	3M TAPE BROKEN	REPLACE 3M TAPE	WEAR & TEAR
03	4.08	3	US/LS	25000	0	10	10	DIRTINESS	CLEAN	WEAR & TEAR
04	4.08	1	US	43700	110	10	100	DIRTINESS	CLEAN	WEAR & TEAR
05	4.08	8	US	28000	1500	70	50	DIRTINESS	CLEAN	WEAR & TEAR
06	4.08	10	US	7000	3000	50	50	DIRTINESS	CLEAN	WEAR & TEAR
07	4.08	10	US	6000	300	10	10	DIRTINESS	CLEAN	WEAR & TEAR
08	4.08	10	LS	2500	2800	20	20	DIRTINESS	CLEAN	WEAR & TEAR
09	2.01	7	US/LS	5000	3500	3000	10	TRAILING EDGE PITTING	SAND, PAINT AND POLISH	WEAR & TEAR

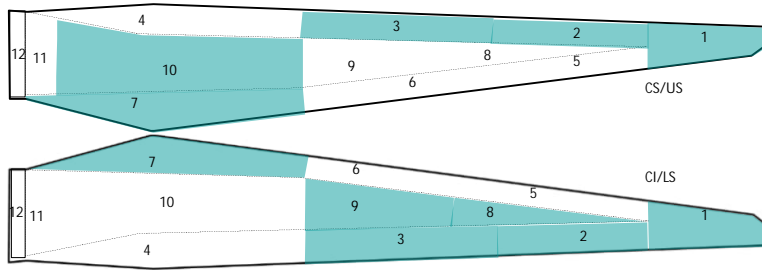


ZONES

- 1 TIP
- 2 TIP LEADING EDGE
- 3 MEDIUM LEADING EDGE
- 4 ROOT LEADING EDGE
- 5 TIP TRAILING EDGE
- 6 MEDIUM TRAILING EDGE
- 7 ROOT TRAILING EDGE
- 8 SPAR AREA TIP
- 9 SPAR AREA MEDIUM
- 10 SPAR AREA ROOT
- 11 ROOT
- 12 INTERIOR ROOT

BLADE B

DAMAGE N°	CODE	POSITION (mm)		DISTANCE (mm)			DESCRIPTION	WORK TO DO	BREAK CAUSE	
		ZONE	SHELL	ROOT	LE	LENGTH				TRANS
01	4.08	2	US/LS	3500	0	300	10	DIRTINESS	CLEAN	WEAR & TEAR
02	4.08	3	US/LS	25000	0	10	10	DIRTINESS	CLEAN	WEAR & TEAR
03	4.08	1	US	43700	110	100	10	DIRTINESS	CLEAN	WEAR & TEAR
04	4.08	10	US	6000	2500	20	20	DIRTINESS	CLEAN	WEAR & TEAR
05	4.08	10	US	4000	3000	10	10	DIRTINESS	CLEAN	WEAR & TEAR
06	4.08	8	LS	38000	300	10	10	DIRTINESS	CLEAN	WEAR & TEAR
07	4.08	9	LS	2500	150	10	10	DIRTINESS	CLEAN	WEAR & TEAR
08	2.01	7	US/LS	5000	3500	5000	10	TRAILING EDGE PITTING	SAND, PAINT AND POLISH	WEAR & TEAR

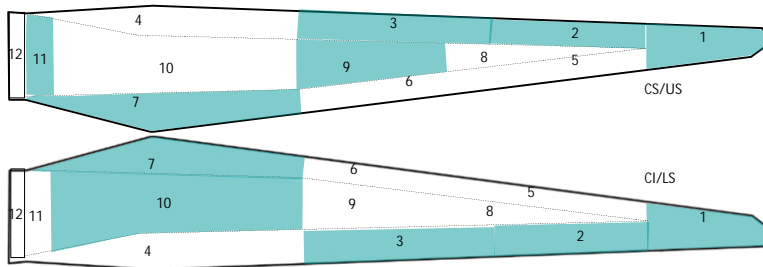


ZONES

- 1 TIP
- 2 TIP LEADING EDGE
- 3 MEDIUM LEADING EDGE
- 4 ROOT LEADING EDGE
- 5 TIP TRAILING EDGE
- 6 MEDIUM TRAILING EDGE
- 7 ROOT TRAILING EDGE
- 8 SPAR AREA TIP
- 9 SPAR AREA MEDIUM
- 10 SPAR AREA ROOT
- 11 ROOT
- 12 INTERIOR ROOT

BLADE C

DAMAGE N°	CODE	POSITION (mm)			DISTANCE (mm)			DESCRIPTION	WORK TO DO	BREAK CAUSE
		ZONE	SHELL	ROOT	LE	LENGTH	TRANS			
01	1.03	2	US/LS	37000	0	300	150	3M TAPE BROKEN	REPLACE 3M TAPE	WEAR & TEAR
02	1.03	2	US/LS	33000	0	2000	10	3M TAPE BROKEN	REPLACE 3M TAPE	WEAR & TEAR
03	4.08	3	US/LS	25000	0	10	10	DIRTINESS	CLEAN	WEAR & TEAR
04	4.08	1	US	43700	100	10	10	DIRTINESS	CLEAN	WEAR & TEAR
05	4.08	9	US	18000	1200	10	10	DIRTINESS	CLEAN	WEAR & TEAR
06	4.08	11	US	0	1000	1000	1000	DIRTINESS	CLEAN	WEAR & TEAR
07	4.08	1	LS	43700	100	10	10	DIRTINESS	CLEAN	WEAR & TEAR
08	4.08	10	LS	25000	50	10	10	DIRTINESS	CLEAN	WEAR & TEAR
09	2.01	7	US/LS	5000	35000	3000	10	TRAILING EDGE PITTING	SAND, PAINT AND POLISH	WEAR & TEAR

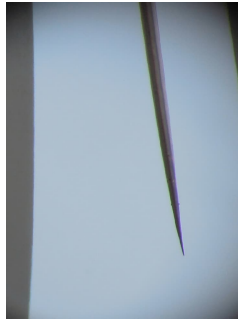


ZONES

- 1 TIP
- 2 TIP LEADING EDGE
- 3 MEDIUM LEADING EDGE
- 4 ROOT LEADING EDGE
- 5 TIP TRAILING EDGE
- 6 MEDIUM TRAILING EDGE
- 7 ROOT TRAILING EDGE
- 8 SPAR AREA TIP
- 9 SPAR AREA MEDIUM
- 10 SPAR AREA ROOT
- 11 ROOT
- 12 INTERIOR ROOT

3. PHOTOS OF DAMAGES
BLADE A

DAMAGE N°	CODE	POSITION (mm)			DISTANCE (mm)			DESCRIPTION	WORK TO BE DONE	BREAK CAUSE
		ZONE	SHELL	ROOT	LE	LENGTH	TRANS			
01	1.03	1	US/LS	43000	0	10	10	3M TAPE BROKEN	REPLACE 3M TAPE	WEAR & TEAR



REMARK

DAMAGE N°	CODE	POSITION (mm)			DISTANCE (mm)			DESCRIPTION	WORK TO BE DONE	BREAK CAUSE
		ZONE	SHELL	ROOT	LE	LENGTH	TRANS			
02	1.03	2	US/LS	34000	0	10	10	3M TAPE BROKEN	REPLACE 3M TAPE	WEAR & TEAR



REMARK

DAMAGE N°	CODE	POSITION (mm)			DISTANCE (mm)			DESCRIPTION	WORK TO BE DONE	BREAK CAUSE
		ZONE	SHELL	ROOT	LE	LENGTH	TRANS			
03	4.08	3	US/LS	25000	0	10	10	DIRTINESS	CLEAN	WEAR & TEAR



REMARK

3. PHOTOS OF DAMAGES
BLADE A

DAMAGE N°	CODE	POSITION (mm)			DISTANCE (mm)			DESCRIPTION	WORK TO BE DONE	BREAK CAUSE
		ZONE	SHELL	ROOT	LE	LENGTH	TRANS			
04	4.08	1	US	43700	110	10	100	DIRTINESS	CLEAN	WEAR & TEAR



REMARK

DAMAGE N°	CODE	POSITION (mm)			DISTANCE (mm)			DESCRIPTION	WORK TO BE DONE	BREAK CAUSE
		ZONE	SHELL	ROOT	LE	LENGTH	TRANS			
05	4.08	8	US	28000	1500	70	50	DIRTINESS	CLEAN	WEAR & TEAR



REMARK

DAMAGE N°	CODE	POSITION (mm)			DISTANCE (mm)			DESCRIPTION	WORK TO BE DONE	BREAK CAUSE
		ZONE	SHELL	ROOT	LE	LENGTH	TRANS			
06	4.08	10	US	7000	3000	50	50	DIRTINESS	CLEAN	WEAR & TEAR



REMARK

3. PHOTOS OF DAMAGES
BLADE A

DAMAGE		POSITION (mm)			DISTANCE (mm)			DESCRIPTION	WORK TO BE DONE	BREAK CAUSE
N°	CODE	ZONE	SHELL	ROOT	LE	LENGTH	TRANS			
07	4.08	10	US	6000	300	10	10	DIRTINESS	CLEAN	WEAR & TEAR



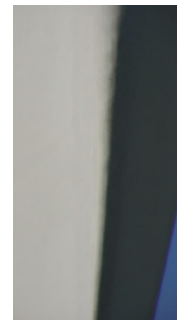
REMARK

DAMAGE		POSITION (mm)			DISTANCE (mm)			DESCRIPTION	WORK TO BE DONE	BREAK CAUSE
N°	CODE	ZONE	SHELL	ROOT	LE	LENGTH	TRANS			
08	4.08	10	LS	2500	2800	20	20	DIRTINESS	CLEAN	WEAR & TEAR



REMARK

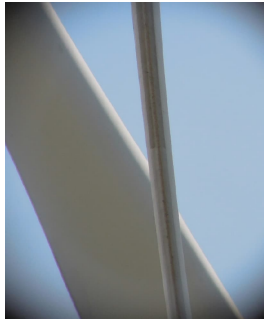
DAMAGE		POSITION (mm)			DISTANCE (mm)			DESCRIPTION	WORK TO BE DONE	BREAK CAUSE
N°	CODE	ZONE	SHELL	ROOT	LE	LENGTH	TRANS			
09	2.01	7	US/LS	5000	3500	3000	10	TRAILING EDGE PITTING	SAND, PAINT AND POLISH	WEAR & TEAR



REMARK

BLADE B

DAMAGE		POSITION (mm)			DISTANCE (mm)			DESCRIPTION	WORK TO BE DONE	BREAK CAUSE
N°	CODE	ZONE	SHELL	ROOT	LE	LENGTH	TRANS			
01	4.08	2	US/LS	3500	0	300	10	DIRTINESS	CLEAN	WEAR & TEAR



REMARK

DAMAGE		POSITION (mm)			DISTANCE (mm)			DESCRIPTION	WORK TO BE DONE	BREAK CAUSE
N°	CODE	ZONE	SHELL	ROOT	LE	LENGTH	TRANS			
02	4.08	3	US/LS	25000	0	10	10	DIRTINESS	CLEAN	WEAR & TEAR



REMARK

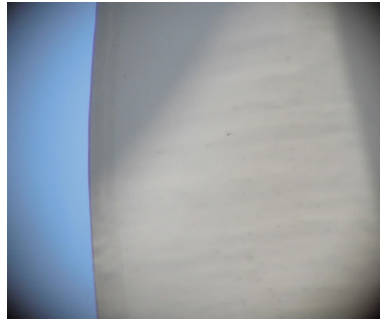
DAMAGE		POSITION (mm)			DISTANCE (mm)			DESCRIPTION	WORK TO BE DONE	BREAK CAUSE
N°	CODE	ZONE	SHELL	ROOT	LE	LENGTH	TRANS			
03	4.08	1	US	43700	110	100	10	DIRTINESS	CLEAN	WEAR & TEAR



REMARK

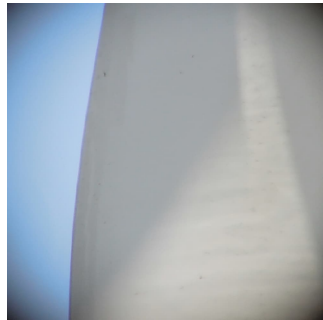
BLADE B

DAMAGE		POSITION (mm)			DISTANCE (mm)			DESCRIPTION	WORK TO BE DONE	BREAK CAUSE
N°	CODE	ZONE	SHELL	ROOT	LE	LENGTH	TRANS			
04	4.08	10	US	6000	2500	20	20	DIRTINESS	CLEAN	WEAR & TEAR



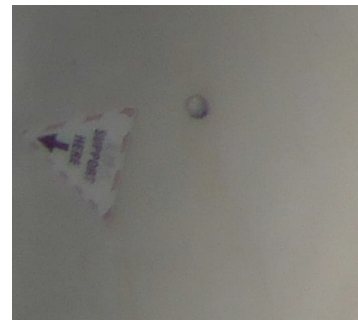
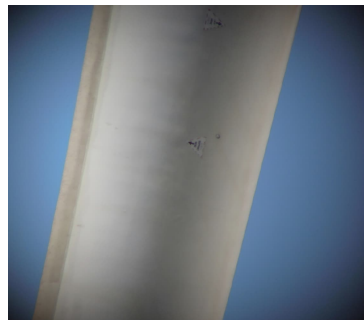
REMARK

DAMAGE		POSITION (mm)			DISTANCE (mm)			DESCRIPTION	WORK TO BE DONE	BREAK CAUSE
N°	CODE	ZONE	SHELL	ROOT	LE	LENGTH	TRANS			
05	4.08	10	US	4000	3000	10	10	DIRTINESS	CLEAN	WEAR & TEAR



REMARK

DAMAGE		POSITION (mm)			DISTANCE (mm)			DESCRIPTION	WORK TO BE DONE	BREAK CAUSE
N°	CODE	ZONE	SHELL	ROOT	LE	LENGTH	TRANS			
06	4.08	8	LS	38000	300	10	10	DIRTINESS	CLEAN	WEAR & TEAR



REMARK

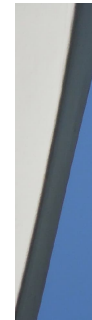
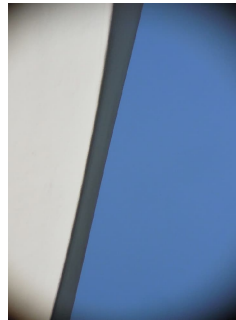
BLADE B

DAMAGE		POSITION (mm)			DISTANCE (mm)			DESCRIPTION	WORK TO BE DONE	BREAK CAUSE
N°	CODE	ZONE	SHELL	ROOT	LE	LENGTH	TRANS			
07	4.08	9	LS	2500	150	10	10	DIRTINESS	CLEAN	WEAR & TEAR



REMARK

DAMAGE		POSITION (mm)			DISTANCE (mm)			DESCRIPTION	WORK TO BE DONE	BREAK CAUSE
N°	CODE	ZONE	SHELL	ROOT	LE	LENGTH	TRANS			
08	2.01	7	US/LS	5000	3500	5000	10	TRAILING EDGE PITTING	SAND, PAINT AND POLISH	WEAR & TEAR



REMARK

BLADE C

DAMAGE		POSITION (mm)			DISTANCE (mm)			DESCRIPTION	WORK TO BE DONE	BREAK CAUSE
N°	CODE	ZONE	SHELL	ROOT	LE	LENGTH	TRANS			
01	1.03	2	US/LS	37000	0	300	150	3M TAPE BROKEN	REPLACE 3M TAPE	WEAR & TEAR



REMARK

DAMAGE		POSITION (mm)			DISTANCE (mm)			DESCRIPTION	WORK TO BE DONE	BREAK CAUSE
N°	CODE	ZONE	SHELL	ROOT	LE	LENGTH	TRANS			
02	1.03	2	US/LS	33000	0	2000	10	3M TAPE BROKEN	REPLACE 3M TAPE	WEAR & TEAR



REMARK

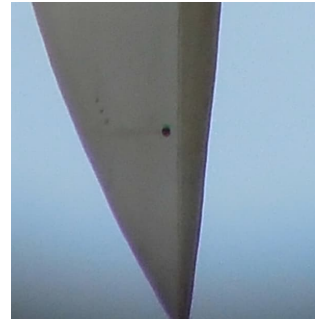
DAMAGE		POSITION (mm)			DISTANCE (mm)			DESCRIPTION	WORK TO BE DONE	BREAK CAUSE
N°	CODE	ZONE	SHELL	ROOT	LE	LENGTH	TRANS			
03	4.08	3	US/LS	25000	0	10	10	DIRTINESS	CLEAN	WEAR & TEAR



REMARK

BLADE C

DAMAGE		POSITION (mm)			DISTANCE (mm)			DESCRIPTION	WORK TO BE DONE	BREAK CAUSE
N°	CODE	ZONE	SHELL	ROOT	LE	LENGTH	TRANS			
04	4.08	1	US	43700	100	10	10	DIRTINESS	CLEAN	WEAR & TEAR



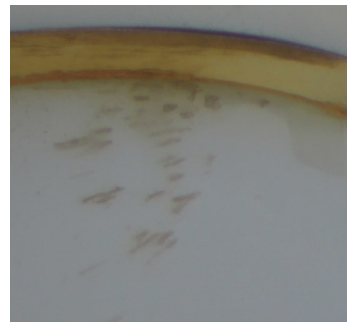
REMARK

DAMAGE		POSITION (mm)			DISTANCE (mm)			DESCRIPTION	WORK TO BE DONE	BREAK CAUSE
N°	CODE	ZONE	SHELL	ROOT	LE	LENGTH	TRANS			
05	4.08	9	US	18000	1200	10	10	DIRTINESS	CLEAN	WEAR & TEAR



REMARK

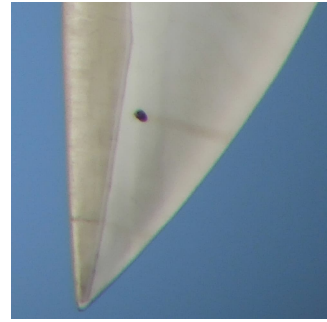
DAMAGE		POSITION (mm)			DISTANCE (mm)			DESCRIPTION	WORK TO BE DONE	BREAK CAUSE
N°	CODE	ZONE	SHELL	ROOT	LE	LENGTH	TRANS			
06	4.08	11	US	0	1000	1000	1000	DIRTINESS	CLEAN	WEAR & TEAR



REMARK

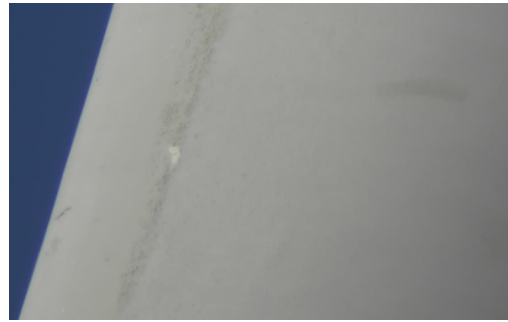
BLADE C

DAMAGE		POSITION (mm)			DISTANCE (mm)			DESCRIPTION	WORK TO BE DONE	BREAK CAUSE
N°	CODE	ZONE	SHELL	ROOT	LE	LENGTH	TRANS			
07	4.08	1	LS	43700	100	10	10	DIRTINESS	CLEAN	WEAR & TEAR



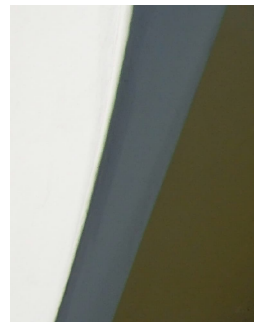
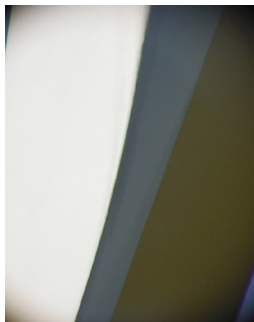
REMARK

DAMAGE		POSITION (mm)			DISTANCE (mm)			DESCRIPTION	WORK TO BE DONE	BREAK CAUSE
N°	CODE	ZONE	SHELL	ROOT	LE	LENGTH	TRANS			
08	4.08	10	LS	25000	50	10	10	DIRTINESS	CLEAN	WEAR & TEAR



REMARK

DAMAGE		POSITION (mm)			DISTANCE (mm)			DESCRIPTION	WORK TO BE DONE	BREAK CAUSE
N°	CODE	ZONE	SHELL	ROOT	LE	LENGTH	TRANS			
09	2.01	7	US/LS	5000	35000	3000	10	TRAILING EDGE PITTING	SAND, PAINT AND POLISH	WEAR & TEAR



REMARK



SIEMENS Gamesa

RENEWABLE ENERGY

BLADE INSPECTION REPORT



VALOREM

Sainte Rose T4

SIEMENS Gamesa Renewable Energy

GLOBAL OPERATIONS

Avda. Ciudad de la Innovación 2,
31621 Sarriguren (Navarra) - Spain

Ref.: INOMG-PL-REP-001-ES

Date: 05/11/2023



GLOBAL OPERATIONS

WIND FARM:	Sainte Rose
WTG:	T4
FL:	WF-FR-9711-1766-Y1-A-004
CLIENT:	VALOREM
WO N°	
SC	France
SC RESPONSIBLE	SEBASTIEN ENGERRAN
SUPERVISOR	WALID LAKHDAR DJEBBARA



1. DATA

1.1 WIND TURBINE DATA

WIND FARM	Sainte Rose
WTG N°	T4
WTG MODEL	G 90
CLIENT	VALOREM
COUNTRY	FRANCE
SERVICE CENTRE	France
PRODUCTION (kWh)	
LINE HOURS OK	
WTG HOURS OK	

1.2 INTERVENTION DATA

CRANE COMPANY	
START DATE	08/06/2023
END DATE	08/06/2023

	TECHNICIAN	CODE	COMPANY	CODE
1	WALID LAKHDAR DJEBBARA	501928	SGRE	4
2			-	-
3			-	-
4			-	-

1.3 BLADE IDENTIFICATION

BLADE A

BLADE N°	001151-44.0P-53
BLADE WEIGHT (kg)	7342
MANUFACTURER	LM
BLADE FINISHED	YES

INTERVENTION TYPE

GROUND

BLADE B

BLADE N°	001152-44.0P-53
BLADE WEIGHT (kg)	7324
MANUFACTURER	LM
BLADE FINISHED	YES

INTERVENTION TYPE

GROUND

BLADE C

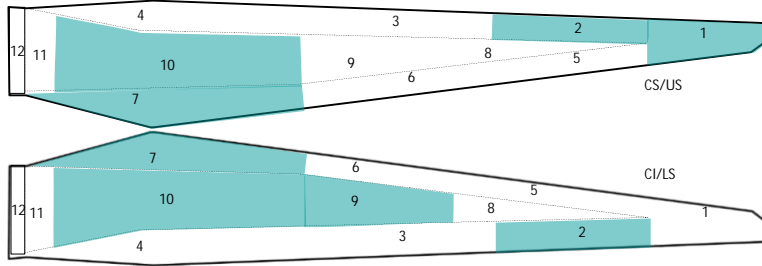
BLADE N°	001150-44.0P-53
BLADE WEIGHT (kg)	7359
MANUFACTURER	LM
BLADE FINISHED	YES

INTERVENTION TYPE

GROUND

2.DAMAGE IDENTIFICATION AND EVALUATION
BLADE A

DAMAGE N°	CODE	POSITION (mm)		DISTANCE (mm)			DESCRIPTION	WORK TO DO	BREAK CAUSE	
		ZONE	SHELL	ROOT	LE	LENGTH				TRANS
01	4.08	2	US/LS	20000	0	10	10	DIRTINESS	CLEAN	WEAR & TEAR
02	4.08	2	US/LS	33000	0	300	150	DIRTINESS	CLEAN	WEAR & TEAR
03	4.08	10	US/LS	18000	300	10	10	DIRTINESS	CLEAN	WEAR & TEAR
04	4.08	10	US/LS	17000	300	10	10	DIRTINESS	CLEAN	WEAR & TEAR
05	4.08	1	US	43700	110	10	100	DIRTINESS	CLEAN	WEAR & TEAR
06	4.08	9	LS	18000	10	10	10	DIRTINESS	CLEAN	WEAR & TEAR
07	2.01	7	US/LS	5000	3500	3000	10	TRAILING EDGE PITTING	SAND, PAINT AND POLISH	WEAR & TEAR

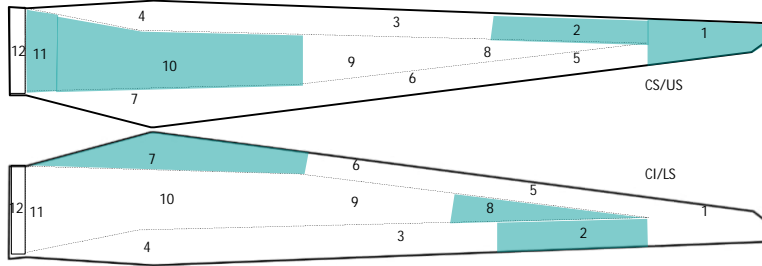


ZONES

- 1 TIP
- 2 TIP LEADING EDGE
- 3 MEDIUM LEADING EDGE
- 4 ROOT LEADING EDGE
- 5 TIP TRAILING EDGE
- 6 MEDIUM TRAILING EDGE
- 7 ROOT TRAILING EDGE
- 8 SPAR AREA TIP
- 9 SPAR AREA MEDIUM
- 10 SPAR AREA ROOT
- 11 ROOT
- 12 INTERIOR ROOT

BLADE B

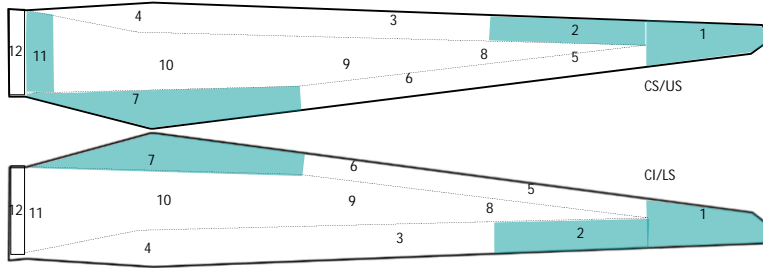
DAMAGE N°	CODE	POSITION (mm)		DISTANCE (mm)			DESCRIPTION	WORK TO DO	BREAK CAUSE	
		ZONE	SHELL	ROOT	LE	LENGTH				TRANS
01	4.08	2	US/LS	33000	0	400	150	DIRTINESS	CLEAN	WEAR & TEAR
02	4.08	2	US/LS	28000	0	10	10	DIRTINESS	CLEAN	WEAR & TEAR
03	4.08	11	US	0	1500	100	100	DIRTINESS	CLEAN	WEAR & TEAR
04	4.08	2	US	3500	200	10	10	DIRTINESS	CLEAN	WEAR & TEAR
05	4.08	1	US	43700	110	10	100	DIRTINESS	CLEAN	WEAR & TEAR
06	4.08	8	LS	33000	300	10	10	DIRTINESS	CLEAN	WEAR & TEAR
07	2.01	7	US/LS	5000	3500	5000	10	TRAILING EDGE PITTING	SAND, PAINT AND POLISH	WEAR & TEAR



- ZONES**
- 1 TIP
 - 2 TIP LEADING EDGE
 - 3 MEDIUM LEADING EDGE
 - 4 ROOT LEADING EDGE
 - 5 TIP TRAILING EDGE
 - 6 MEDIUM TRAILING EDGE
 - 7 ROOT TRAILING EDGE
 - 8 SPAR AREA TIP
 - 9 SPAR AREA MEDIUM
 - 10 SPAR AREA ROOT
 - 11 ROOT
 - 12 INTERIOR ROOT

BLADE C

DAMAGE N°	CODE	POSITION (mm)		DISTANCE (mm)			DESCRIPTION	WORK TO DO	BREAK CAUSE	
		ZONE	SHELL	ROOT	LE	LENGTH				TRANS
01	4.08	2	US/LS	40000	0	300	150	DIRTINESS	CLEAN	WEAR & TEAR
02	4.08	2	US/LS	25000	0	10	10	DIRTINESS	CLEAN	WEAR & TEAR
03	4.08	11	US	0	0	2000	2000	DIRTINESS	CLEAN	WEAR & TEAR
04	4.08	11	US	1500	500	10	10	DIRTINESS	CLEAN	WEAR & TEAR
05	4.08	1	US	43700	110	10	100	DIRTINESS	CLEAN	WEAR & TEAR
06	4.08	1	LS	43700	110	10	100	DIRTINESS	CLEAN	WEAR & TEAR
07	2.01	7	US/LS	5000	3500	5000	10	TRAILING EDGE PITTING	SAND, PAINT AND POLISH	WEAR & TEAR



ZONES

- 1 TIP
- 2 TIP LEADING EDGE
- 3 MEDIUM LEADING EDGE
- 4 ROOT LEADING EDGE
- 5 TIP TRAILING EDGE
- 6 MEDIUM TRAILING EDGE
- 7 ROOT TRAILING EDGE
- 8 SPAR AREA TIP
- 9 SPAR AREA MEDIUM
- 10 SPAR AREA ROOT
- 11 ROOT
- 12 INTERIOR ROOT

3. PHOTOS OF DAMAGES
BLADE A

DAMAGE N°	CODE	POSITION (mm)			DISTANCE (mm)			DESCRIPTION	WORK TO BE DONE	BREAK CAUSE
		ZONE	SHELL	ROOT	LE	LENGTH	TRANS			
01	4.08	2	US/LS	20000	0	10	10	DIRTINESS	CLEAN	WEAR & TEAR



REMARK

DAMAGE N°	CODE	POSITION (mm)			DISTANCE (mm)			DESCRIPTION	WORK TO BE DONE	BREAK CAUSE
		ZONE	SHELL	ROOT	LE	LENGTH	TRANS			
02	4.08	2	US/LS	33000	0	300	150	DIRTINESS	CLEAN	WEAR & TEAR



REMARK

DAMAGE N°	CODE	POSITION (mm)			DISTANCE (mm)			DESCRIPTION	WORK TO BE DONE	BREAK CAUSE
		ZONE	SHELL	ROOT	LE	LENGTH	TRANS			
03	4.08	10	US/LS	18000	300	10	10	DIRTINESS	CLEAN	WEAR & TEAR



REMARK

3. PHOTOS OF DAMAGES
BLADE A

DAMAGE		POSITION (mm)			DISTANCE (mm)			DESCRIPTION	WORK TO BE DONE	BREAK CAUSE
N°	CODE	ZONE	SHELL	ROOT	LE	LENGTH	TRANS			
04	4.08	10	US/LS	17000	300	10	10	DIRTINESS	CLEAN	WEAR & TEAR



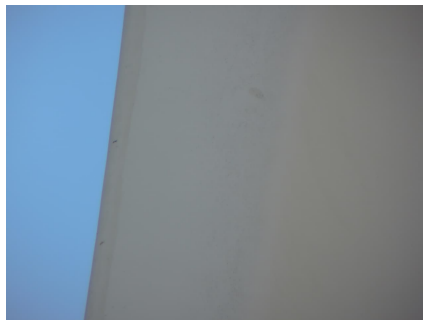
REMARK

DAMAGE		POSITION (mm)			DISTANCE (mm)			DESCRIPTION	WORK TO BE DONE	BREAK CAUSE
N°	CODE	ZONE	SHELL	ROOT	LE	LENGTH	TRANS			
05	4.08	1	US	43700	110	10	100	DIRTINESS	CLEAN	WEAR & TEAR



REMARK

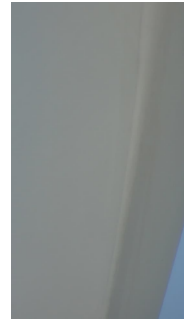
DAMAGE		POSITION (mm)			DISTANCE (mm)			DESCRIPTION	WORK TO BE DONE	BREAK CAUSE
N°	CODE	ZONE	SHELL	ROOT	LE	LENGTH	TRANS			
06	4.08	9	LS	18000	10	10	10	DIRTINESS	CLEAN	WEAR & TEAR



REMARK

3. PHOTOS OF DAMAGES
BLADE A

DAMAGE		POSITION (mm)			DISTANCE (mm)			DESCRIPTION	WORK TO BE DONE	BREAK CAUSE
N°	CODE	ZONE	SHELL	ROOT	LE	LENGTH	TRANS			
07	2.01	7	US/LS	5000	3500	3000	10	TRAILING EDGE PITTING	SAND, PAINT AND POLISH	WEAR & TEAR



REMARK

BLADE B

DAMAGE		POSITION (mm)			DISTANCE (mm)			DESCRIPTION	WORK TO BE DONE	BREAK CAUSE
N°	CODE	ZONE	SHELL	ROOT	LE	LENGTH	TRANS			
01	4.08	2	US/LS	33000	0	400	150	DIRTINESS	CLEAN	WEAR & TEAR



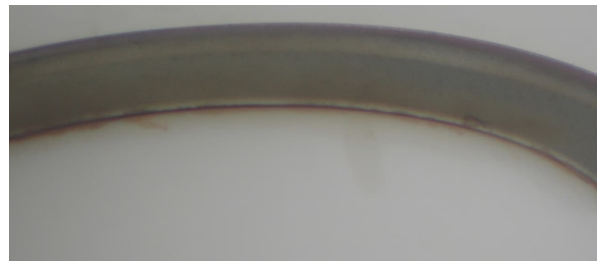
REMARK

DAMAGE		POSITION (mm)			DISTANCE (mm)			DESCRIPTION	WORK TO BE DONE	BREAK CAUSE
N°	CODE	ZONE	SHELL	ROOT	LE	LENGTH	TRANS			
02	4.08	2	US/LS	28000	0	10	10	DIRTINESS	CLEAN	WEAR & TEAR



REMARK

DAMAGE		POSITION (mm)			DISTANCE (mm)			DESCRIPTION	WORK TO BE DONE	BREAK CAUSE
N°	CODE	ZONE	SHELL	ROOT	LE	LENGTH	TRANS			
03	4.08	11	US	0	1500	100	100	DIRTINESS	CLEAN	WEAR & TEAR



REMARK

BLADE B

DAMAGE		POSITION (mm)			DISTANCE (mm)			DESCRIPTION	WORK TO BE DONE	BREAK CAUSE
N°	CODE	ZONE	SHELL	ROOT	LE	LENGTH	TRANS			
04	4.08	2	US	3500	200	10	10	DIRTINESS	CLEAN	WEAR & TEAR



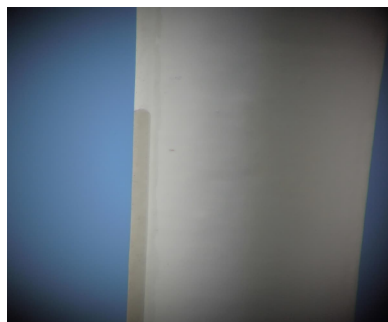
REMARK

DAMAGE		POSITION (mm)			DISTANCE (mm)			DESCRIPTION	WORK TO BE DONE	BREAK CAUSE
N°	CODE	ZONE	SHELL	ROOT	LE	LENGTH	TRANS			
05	4.08	1	US	43700	110	10	100	DIRTINESS	CLEAN	WEAR & TEAR



REMARK

DAMAGE		POSITION (mm)			DISTANCE (mm)			DESCRIPTION	WORK TO BE DONE	BREAK CAUSE
N°	CODE	ZONE	SHELL	ROOT	LE	LENGTH	TRANS			
06	4.08	8	LS	33000	300	10	10	DIRTINESS	CLEAN	WEAR & TEAR



REMARK

BLADE B

DAMAGE		POSITION (mm)			DISTANCE (mm)			DESCRIPTION	WORK TO BE DONE	BREAK CAUSE
N°	CODE	ZONE	SHELL	ROOT	LE	LENGTH	TRANS			
07	2.01	7	US/LS	5000	3500	5000	10	TRAILING EDGE PITTING	SAND, PAINT AND POLISH	WEAR & TEAR



REMARK

BLADE C

DAMAGE		POSITION (mm)			DISTANCE (mm)			DESCRIPTION	WORK TO BE DONE	BREAK CAUSE
N°	CODE	ZONE	SHELL	ROOT	LE	LENGTH	TRANS			
01	4.08	2	US/LS	40000	0	300	150	DIRTINESS	CLEAN	WEAR & TEAR



REMARK

DAMAGE		POSITION (mm)			DISTANCE (mm)			DESCRIPTION	WORK TO BE DONE	BREAK CAUSE
N°	CODE	ZONE	SHELL	ROOT	LE	LENGTH	TRANS			
02	4.08	2	US/LS	25000	0	10	10	DIRTINESS	CLEAN	WEAR & TEAR



REMARK

DAMAGE		POSITION (mm)			DISTANCE (mm)			DESCRIPTION	WORK TO BE DONE	BREAK CAUSE
N°	CODE	ZONE	SHELL	ROOT	LE	LENGTH	TRANS			
03	4.08	11	US	0	0	2000	2000	DIRTINESS	CLEAN	WEAR & TEAR



REMARK

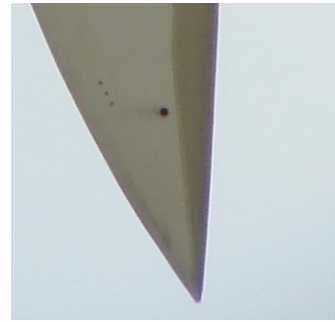
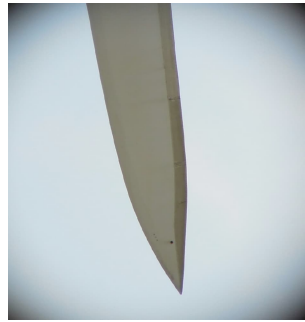
BLADE C

DAMAGE		POSITION (mm)			DISTANCE (mm)			DESCRIPTION	WORK TO BE DONE	BREAK CAUSE
N°	CODE	ZONE	SHELL	ROOT	LE	LENGTH	TRANS			
04	4.08	11	US	1500	500	10	10	DIRTINESS	CLEAN	WEAR & TEAR



REMARK

DAMAGE		POSITION (mm)			DISTANCE (mm)			DESCRIPTION	WORK TO BE DONE	BREAK CAUSE
N°	CODE	ZONE	SHELL	ROOT	LE	LENGTH	TRANS			
05	4.08	1	US	43700	110	10	100	DIRTINESS	CLEAN	WEAR & TEAR



REMARK

DAMAGE		POSITION (mm)			DISTANCE (mm)			DESCRIPTION	WORK TO BE DONE	BREAK CAUSE
N°	CODE	ZONE	SHELL	ROOT	LE	LENGTH	TRANS			
06	4.08	1	LS	43700	110	10	100	DIRTINESS	CLEAN	WEAR & TEAR



REMARK

BLADE C

DAMAGE		POSITION (mm)			DISTANCE (mm)			DESCRIPTION	WORK TO BE DONE	BREAK CAUSE
N°	CODE	ZONE	SHELL	ROOT	LE	LENGTH	TRANS			
07	2.01	7	US/LS	5000	3500	5000	10	TRAILING EDGE PITTING	SAND, PAINT AND POLISH	WEAR & TEAR



REMARK



SIEMENS Gamesa

RENEWABLE ENERGY

BLADE INSPECTION REPORT



VALOREM

Sainte Rose T5

SIEMENS Gamesa Renewable Energy

GLOBAL OPERATIONS

Avda. Ciudad de la Innovación 2,
31621 Sarriguren (Navarra) - Spain

Ref.: INOMG-PL-REP-001-ES

Date: 05/11/2023

GLOBAL OPERATIONS

WIND FARM:	Sainte Rose
WTG:	T5
FL:	WF-FR-9711-1766-Y2-A-004
CLIENT:	VALOREM
WO N°	
SC	France
SC RESPONSIBLE	SEBASTIEN ENGERRAN
SUPERVISOR	WALID LAKHDAR DJEBBARA



1. DATA

1.1 WIND TURBINE DATA

WIND FARM	Sainte Rose
WTG N°	T5
WTG MODEL	G 90
CLIENT	VALOREM
COUNTRY	France
SERVICE CENTRE	France
PRODUCTION (kWh)	
LINE HOURS OK	
WTG HOURS OK	

1.2 INTERVENTION DATA

CRANE COMPANY	
START DATE	15/06/2023
END DATE	15/06/2023

	TECHNICIAN	CODE	COMPANY	CODE
1	WALID LAKHDAR DJEBBARA	501928	SGRE	4
2			-	-
3			-	-
4			-	-

1.3 BLADE IDENTIFICATION

BLADE A

BLADE N°	001154-44.OP53
BLADE WEIGHT (kg)	7250
MANUFACTURER	LM
BLADE FINISHED	YES
INTERVENTION TYPE	GROUND

BLADE B

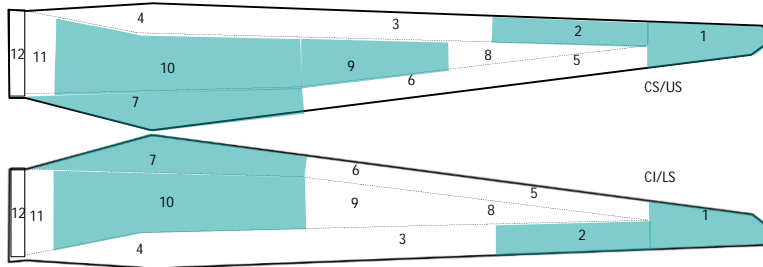
BLADE N°	001147-44.OP-53
BLADE WEIGHT (kg)	7180
MANUFACTURER	LM
BLADE FINISHED	YES
INTERVENTION TYPE	GROUND

BLADE C

BLADE N°	001154-44.OP-53
BLADE WEIGHT (kg)	7233
MANUFACTURER	LM
BLADE FINISHED	YES
INTERVENTION TYPE	GROUND

2.DAMAGE IDENTIFICATION AND EVALUATION
BLADE A

DAMAGE N°	CODE	POSITION (mm)		DISTANCE (mm)			DESCRIPTION	WORK TO DO	BREAK CAUSE	
		ZONE	SHELL	ROOT	LE	LENGTH				TRANS
01	1.03	1	US/LS	43700	0	1000	150	3M TAPE BROKEN	REPLACE 3M TAPE	WEAR & TEAR
02	4.08	2	US/LS	39000	0	1000	150	DIRTINESS	CLEAN	WEAR & TEAR
03	4.08	1	US	43700	100	10	10	DIRTINESS	CLEAN	WEAR & TEAR
04	4.08	9	US	27000	1500	300	300	DIRTINESS	CLEAN	WEAR & TEAR
05	4.08	9	US	25000	1500	300	300	DIRTINESS	CLEAN	WEAR & TEAR
06	4.08	10	US	23000	400	10	10	DIRTINESS	CLEAN	WEAR & TEAR
07	4.08	10	US	7000	400	500	500	DIRTINESS	CLEAN	WEAR & TEAR
08	4.08	1	LS	43700	110	10	100	DIRTINESS	CLEAN	WEAR & TEAR
09	4.08	10	LS	19000	300	10	10	DIRTINESS	CLEAN	WEAR & TEAR
10	2.01	7	US/LS	5000	3500	5000	10	TRAILING EDGE PITTING	SAND, PAINT AND POLISH	WEAR & TEAR

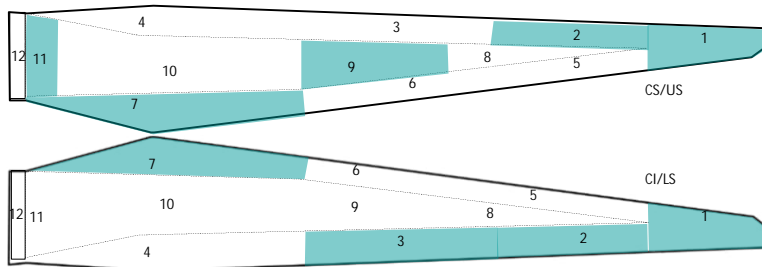


ZONES

- 1 TIP
- 2 TIP LEADING EDGE
- 3 MEDIUM LEADING EDGE
- 4 ROOT LEADING EDGE
- 5 TIP TRAILING EDGE
- 6 MEDIUM TRAILING EDGE
- 7 ROOT TRAILING EDGE
- 8 SPAR AREA TIP
- 9 SPAR AREA MEDIUM
- 10 SPAR AREA ROOT
- 11 ROOT
- 12 INTERIOR ROOT

BLADE B

N°	DAMAGE CODE	POSITION (mm)			DISTANCE (mm)			DESCRIPTION	WORK TO DO	BREAK CAUSE
		ZONE	SHELL	ROOT	LE	LENGTH	TRANS			
01	1.03	1	US/LS	43700	0	1000	120	3M TAPE BROKEN	REPLACE 3M TAPE	WEAR & TEAR
02	4.08	2	US/LS	34000	0	3000	120	DIRTINESS	CLEAN	WEAR & TEAR
03	4.08	2	US/LS	33000	0	1000	120	DIRTINESS	CLEAN	WEAR & TEAR
04	4.08	11	US	0	400	100	200	DIRTINESS	CLEAN	WEAR & TEAR
05	4.08	9	US	27000	500	500	500	DIRTINESS	CLEAN	WEAR & TEAR
06	4.08	1	US	43700	150	10	100	DIRTINESS	CLEAN	WEAR & TEAR
07	4.08	1	LS	43700	150	10	100	DIRTINESS	CLEAN	WEAR & TEAR
08	4.08	3	LS	27000	300	10	10	DIRTINESS	CLEAN	WEAR & TEAR
09	2.01	7	US/LS	5000	3500	3000	10	TRAILING EDGE PITTING	SAND, PAINT AND POLISH	WEAR & TEAR

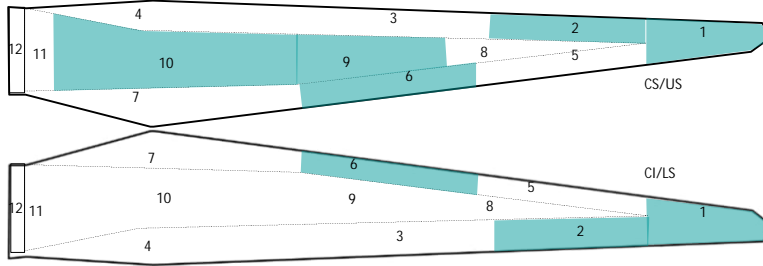


ZONES

- 1 TIP
- 2 TIP LEADING EDGE
- 3 MEDIUM LEADING EDGE
- 4 ROOT LEADING EDGE
- 5 TIP TRAILING EDGE
- 6 MEDIUM TRAILING EDGE
- 7 ROOT TRAILING EDGE
- 8 SPAR AREA TIP
- 9 SPAR AREA MEDIUM
- 10 SPAR AREA ROOT
- 11 ROOT
- 12 INTERIOR ROOT

BLADE C

DAMAGE N°	CODE	POSITION (mm)		DISTANCE (mm)			DESCRIPTION	WORK TO DO	BREAK CAUSE	
		ZONE	SHELL	ROOT	LE	LENGTH				TRANS
01	4.08	1	US/LS	43700	0	3000	140	DIRTINESS	CLEAN	WEAR & TEAR
02	4.08	2	US/LS	34000	0	2000	140	DIRTINESS	CLEAN	WEAR & TEAR
03	4.08	10	US	6000	400	10	10	DIRTINESS	CLEAN	WEAR & TEAR
04	4.08	9	US	20000	400	1000	400	DIRTINESS	CLEAN	WEAR & TEAR
05	4.08	1	US	43700	150	10	100	DIRTINESS	CLEAN	WEAR & TEAR
06	4.08	1	LS	43700	150	10	100	DIRTINESS	CLEAN	WEAR & TEAR
07	2.01	6	US/LS	20000	1500	2000	10	TRAILING EDGE PITTING	SAND, PAINT AND POLISH	WEAR & TEAR



ZONES

- 1 TIP
- 2 TIP LEADING EDGE
- 3 MEDIUM LEADING EDGE
- 4 ROOT LEADING EDGE
- 5 TIP TRAILING EDGE
- 6 MEDIUM TRAILING EDGE
- 7 ROOT TRAILING EDGE
- 8 SPAR AREA TIP
- 9 SPAR AREA MEDIUM
- 10 SPAR AREA ROOT
- 11 ROOT
- 12 INTERIOR ROOT

3. PHOTOS OF DAMAGES
BLADE A

DAMAGE N°	CODE	POSITION (mm)			DISTANCE (mm)			DESCRIPTION	WORK TO BE DONE	BREAK CAUSE
		ZONE	SHELL	ROOT	LE	LENGTH	TRANS			
01	1.03	1	US/LS	43700	0	1000	150	3M TAPE BROKEN	REPLACE 3M TAPE	WEAR & TEAR



REMARK

DAMAGE N°	CODE	POSITION (mm)			DISTANCE (mm)			DESCRIPTION	WORK TO BE DONE	BREAK CAUSE
		ZONE	SHELL	ROOT	LE	LENGTH	TRANS			
02	4.08	2	US/LS	39000	0	1000	150	DIRTINESS	CLEAN	WEAR & TEAR



REMARK

DAMAGE N°	CODE	POSITION (mm)			DISTANCE (mm)			DESCRIPTION	WORK TO BE DONE	BREAK CAUSE
		ZONE	SHELL	ROOT	LE	LENGTH	TRANS			
03	4.08	1	US	43700	100	10	10	DIRTINESS	CLEAN	WEAR & TEAR



REMARK

3. PHOTOS OF DAMAGES
BLADE A

DAMAGE N°	CODE	POSITION (mm)			DISTANCE (mm)			DESCRIPTION	WORK TO BE DONE	BREAK CAUSE
		ZONE	SHELL	ROOT	LE	LENGTH	TRANS			
04	4.08	9	US	27000	1500	300	300	DIRTINESS	CLEAN	WEAR & TEAR



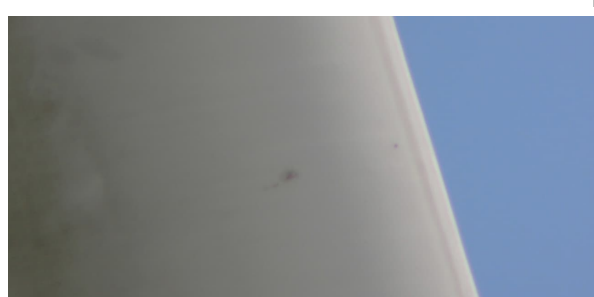
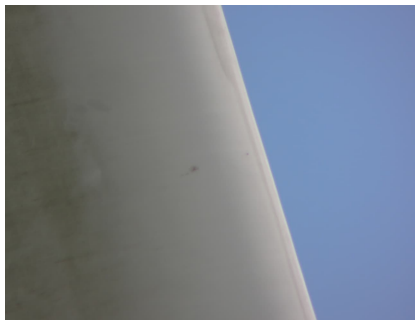
REMARK

DAMAGE N°	CODE	POSITION (mm)			DISTANCE (mm)			DESCRIPTION	WORK TO BE DONE	BREAK CAUSE
		ZONE	SHELL	ROOT	LE	LENGTH	TRANS			
05	4.08	9	US	25000	1500	300	300	DIRTINESS	CLEAN	WEAR & TEAR



REMARK

DAMAGE N°	CODE	POSITION (mm)			DISTANCE (mm)			DESCRIPTION	WORK TO BE DONE	BREAK CAUSE
		ZONE	SHELL	ROOT	LE	LENGTH	TRANS			
06	4.08	10	US	23000	400	10	10	DIRTINESS	CLEAN	WEAR & TEAR



REMARK

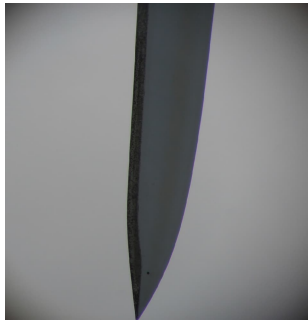
3. PHOTOS OF DAMAGES
BLADE A

DAMAGE		POSITION (mm)			DISTANCE (mm)			DESCRIPTION	WORK TO BE DONE	BREAK CAUSE
N°	CODE	ZONE	SHELL	ROOT	LE	LENGTH	TRANS			
07	4.08	10	US	7000	400	500	500	DIRTINESS	CLEAN	WEAR & TEAR



REMARK

DAMAGE		POSITION (mm)			DISTANCE (mm)			DESCRIPTION	WORK TO BE DONE	BREAK CAUSE
N°	CODE	ZONE	SHELL	ROOT	LE	LENGTH	TRANS			
08	4.08	1	LS	43700	110	10	100	DIRTINESS	CLEAN	WEAR & TEAR



REMARK

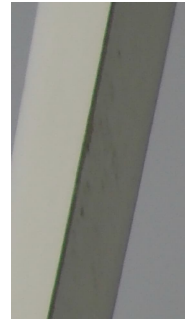
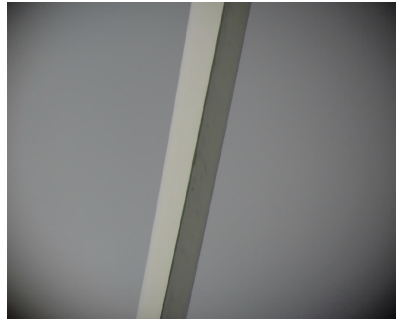
DAMAGE		POSITION (mm)			DISTANCE (mm)			DESCRIPTION	WORK TO BE DONE	BREAK CAUSE
N°	CODE	ZONE	SHELL	ROOT	LE	LENGTH	TRANS			
09	4.08	10	LS	19000	300	10	10	DIRTINESS	CLEAN	WEAR & TEAR



REMARK

3. PHOTOS OF DAMAGES
BLADE A

DAMAGE		POSITION (mm)			DISTANCE (mm)			DESCRIPTION	WORK TO BE DONE	BREAK CAUSE
N°	CODE	ZONE	SHELL	ROOT	LE	LENGTH	TRANS			
10	2.01	7	US/LS	5000	3500	5000	10	TRAILING EDGE PITTING	SAND, PAINT AND POLISH	WEAR & TEAR



REMARK

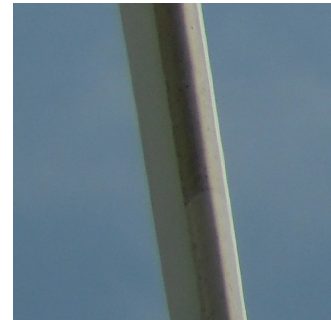
BLADE B

DAMAGE		POSITION (mm)			DISTANCE (mm)			DESCRIPTION	WORK TO BE DONE	BREAK CAUSE
N°	CODE	ZONE	SHELL	ROOT	LE	LENGTH	TRANS			
01	1.03	1	US/LS	43700	0	1000	120	3M TAPE BROKEN	REPLACE 3M TAPE	WEAR & TEAR



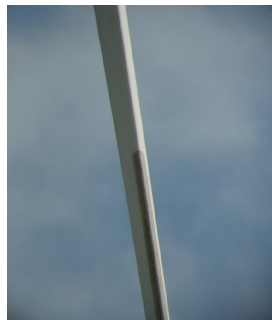
REMARK

DAMAGE		POSITION (mm)			DISTANCE (mm)			DESCRIPTION	WORK TO BE DONE	BREAK CAUSE
N°	CODE	ZONE	SHELL	ROOT	LE	LENGTH	TRANS			
02	4.08	2	US/LS	34000	0	3000	120	DIRTINESS	CLEAN	WEAR & TEAR



REMARK

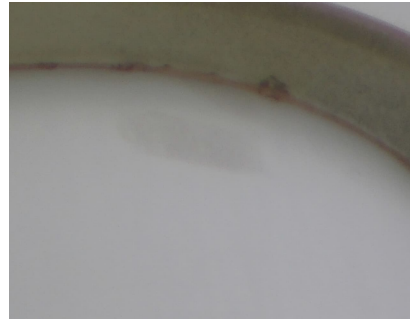
DAMAGE		POSITION (mm)			DISTANCE (mm)			DESCRIPTION	WORK TO BE DONE	BREAK CAUSE
N°	CODE	ZONE	SHELL	ROOT	LE	LENGTH	TRANS			
03	4.08	2	US/LS	33000	0	1000	120	DIRTINESS	CLEAN	WEAR & TEAR



REMARK

BLADE B

DAMAGE		POSITION (mm)			DISTANCE (mm)			DESCRIPTION	WORK TO BE DONE	BREAK CAUSE
N°	CODE	ZONE	SHELL	ROOT	LE	LENGTH	TRANS			
04	4.08	11	US	0	400	100	200	DIRTINESS	CLEAN	WEAR & TEAR



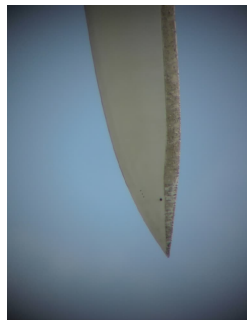
REMARK

DAMAGE		POSITION (mm)			DISTANCE (mm)			DESCRIPTION	WORK TO BE DONE	BREAK CAUSE
N°	CODE	ZONE	SHELL	ROOT	LE	LENGTH	TRANS			
05	4.08	9	US	27000	500	500	500	DIRTINESS	CLEAN	WEAR & TEAR



REMARK

DAMAGE		POSITION (mm)			DISTANCE (mm)			DESCRIPTION	WORK TO BE DONE	BREAK CAUSE
N°	CODE	ZONE	SHELL	ROOT	LE	LENGTH	TRANS			
06	4.08	1	US	43700	150	10	100	DIRTINESS	CLEAN	WEAR & TEAR



REMARK

BLADE B

DAMAGE		POSITION (mm)			DISTANCE (mm)			DESCRIPTION	WORK TO BE DONE	BREAK CAUSE
N°	CODE	ZONE	SHELL	ROOT	LE	LENGTH	TRANS			
07	4.08	1	LS	43700	150	10	100	DIRTINESS	CLEAN	WEAR & TEAR



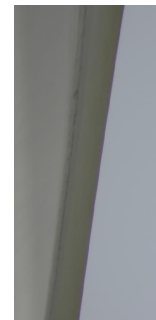
REMARK

DAMAGE		POSITION (mm)			DISTANCE (mm)			DESCRIPTION	WORK TO BE DONE	BREAK CAUSE
N°	CODE	ZONE	SHELL	ROOT	LE	LENGTH	TRANS			
08	4.08	3	LS	27000	300	10	10	DIRTINESS	CLEAN	WEAR & TEAR



REMARK

DAMAGE		POSITION (mm)			DISTANCE (mm)			DESCRIPTION	WORK TO BE DONE	BREAK CAUSE
N°	CODE	ZONE	SHELL	ROOT	LE	LENGTH	TRANS			
09	2.01	7	US/LS	5000	3500	3000	10	TRAILING EDGE PITTING	SAND, PAINT AND POLISH	WEAR & TEAR



REMARK

BLADE C

DAMAGE		POSITION (mm)			DISTANCE (mm)			DESCRIPTION	WORK TO BE DONE	BREAK CAUSE
N°	CODE	ZONE	SHELL	ROOT	LE	LENGTH	TRANS			
01	4.08	1	US/LS	43700	0	3000	140	DIRTINESS	CLEAN	WEAR & TEAR



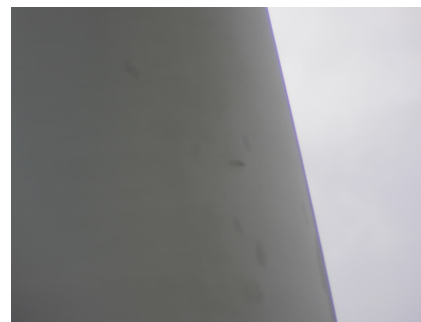
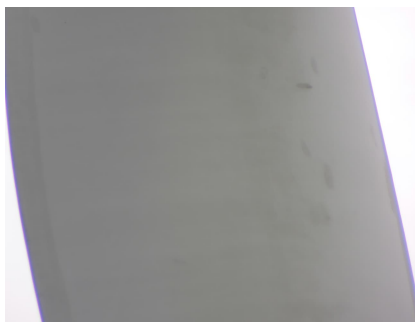
REMARK

DAMAGE		POSITION (mm)			DISTANCE (mm)			DESCRIPTION	WORK TO BE DONE	BREAK CAUSE
N°	CODE	ZONE	SHELL	ROOT	LE	LENGTH	TRANS			
02	4.08	2	US/LS	34000	0	2000	140	DIRTINESS	CLEAN	WEAR & TEAR



REMARK

DAMAGE		POSITION (mm)			DISTANCE (mm)			DESCRIPTION	WORK TO BE DONE	BREAK CAUSE
N°	CODE	ZONE	SHELL	ROOT	LE	LENGTH	TRANS			
03	4.08	10	US	6000	400	10	10	DIRTINESS	CLEAN	WEAR & TEAR



REMARK

BLADE C

DAMAGE		POSITION (mm)			DISTANCE (mm)			DESCRIPTION	WORK TO BE DONE	BREAK CAUSE
N°	CODE	ZONE	SHELL	ROOT	LE	LENGTH	TRANS			
04	4.08	9	US	20000	400	1000	400	DIRTINESS	CLEAN	WEAR & TEAR



REMARK

DAMAGE		POSITION (mm)			DISTANCE (mm)			DESCRIPTION	WORK TO BE DONE	BREAK CAUSE
N°	CODE	ZONE	SHELL	ROOT	LE	LENGTH	TRANS			
05	4.08	1	US	43700	150	10	100	DIRTINESS	CLEAN	WEAR & TEAR



REMARK

DAMAGE		POSITION (mm)			DISTANCE (mm)			DESCRIPTION	WORK TO BE DONE	BREAK CAUSE
N°	CODE	ZONE	SHELL	ROOT	LE	LENGTH	TRANS			
06	4.08	1	LS	43700	150	10	100	DIRTINESS	CLEAN	WEAR & TEAR



REMARK

BLADE C

DAMAGE		POSITION (mm)			DISTANCE (mm)			DESCRIPTION	WORK TO BE DONE	BREAK CAUSE
N°	CODE	ZONE	SHELL	ROOT	LE	LENGTH	TRANS			
07	2.01	6	US/LS	20000	1500	2000	10	TRAILING EDGE PITTING	SAND, PAINT AND POLISH	WEAR & TEAR



REMARK



SIEMENS Gamesa

RENEWABLE ENERGY

BLADE INSPECTION REPORT



VALOREM

Sainte Rose T6

SIEMENS Gamesa Renewable Energy

GLOBAL OPERATIONS

Avda. Ciudad de la Innovación 2,
31621 Sarriguren (Navarra) - Spain

Ref.: INOMG-PL-REP-001-ES

Date: 05/11/2023

GLOBAL OPERATIONS

WIND FARM:	Sainte Rose
WTG:	T6
FL:	WF-FR-971-1766-Y2-A-003
CLIENT:	VALOREM
WO N°	
SC	France
SC RESPONSIBLE	SEBASTIEN ENGERRAN
SUPERVISOR	WALID LAKHDAR DJEBBARA



1. DATA

1.1 WIND TURBINE DATA

WIND FARM	Sainte Rose
WTG N°	T6
WTG MODEL	G 90
CLIENT	VALOREM
COUNTRY	France
SERVICE CENTRE	France
PRODUCTION (kWh)	
LINE HOURS OK	
WTG HOURS OK	

1.2 INTERVENTION DATA

CRANE COMPANY	
START DATE	15/06/2023
END DATE	15/06/2023

	TECHNICIAN	CODE	COMPANY	CODE
1	WALID LAKHDAR DJEBBARA	5019128	SGRE	4
2			-	-
3			-	-
4			-	-

1.3 BLADE IDENTIFICATION

BLADE A

BLADE N°	001143-440P53
BLADE WEIGHT (kg)	7183
MANUFACTURER	LM
BLADE FINISHED	YES

INTERVENTION TYPE

GROUND

BLADE B

BLADE N°	001145-44.0P53
BLADE WEIGHT (kg)	7208
MANUFACTURER	LM
BLADE FINISHED	YES

INTERVENTION TYPE

GROUND

BLADE C

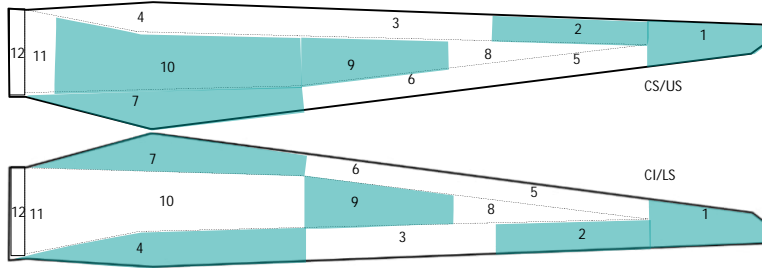
BLADE N°	001144- 44.0P 53
BLADE WEIGHT (kg)	7197
MANUFACTURER	LM
BLADE FINISHED	YES

INTERVENTION TYPE

GROUND

2.DAMAGE IDENTIFICATION AND EVALUATION
BLADE A

DAMAGE N°	CODE	POSITION (mm)		DISTANCE (mm)			DESCRIPTION	WORK TO DO	BREAK CAUSE	
		ZONE	SHELL	ROOT	LE	LENGTH				TRANS
01	1.03	1	US/LS	43700	0	400	100	3M TAPE BROKEN	REPLACE 3M TAPE	WEAR & TEAR
02	4.08	2	US/LS	32500	0	5000	100	DIRTINESS	CLEAN	WEAR & TEAR
03	4.08	4	US/LS	0	0	200	200	DIRTINESS	CLEAN	WEAR & TEAR
04	4.08	2	US	40000	200	10	10	DIRTINESS	CLEAN	WEAR & TEAR
05	4.08	2	US	33000	150	10	10	DIRTINESS	CLEAN	WEAR & TEAR
06	4.08	9	US	30000	500	5000	200	DIRTINESS	CLEAN	WEAR & TEAR
07	4.08	9	LS	28000	300	10	10	DIRTINESS	CLEAN	WEAR & TEAR
08	2.01	7	US/LS	5000	3500	3000	10	TRAILING EDGE PITTING	SAND, PAINT AND POLISH	WEAR & TEAR

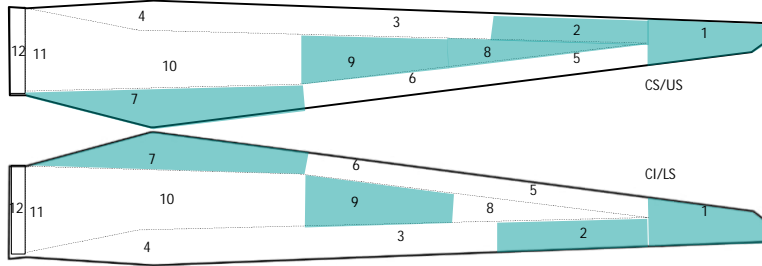


ZONES

- 1 TIP
- 2 TIP LEADING EDGE
- 3 MEDIUM LEADING EDGE
- 4 ROOT LEADING EDGE
- 5 TIP TRAILING EDGE
- 6 MEDIUM TRAILING EDGE
- 7 ROOT TRAILING EDGE
- 8 SPAR AREA TIP
- 9 SPAR AREA MEDIUM
- 10 SPAR AREA ROOT
- 11 ROOT
- 12 INTERIOR ROOT

BLADE B

DAMAGE N°	CODE	POSITION (mm)		DISTANCE (mm)			DESCRIPTION	WORK TO DO	BREAK CAUSE	
		ZONE	SHELL	ROOT	LE	LENGTH				TRANS
01	1.03	1	US/LS	43700	0	1000	100	3M TAPE BROKEN	REPLACE 3M TAPE	WEAR & TEAR
02	4.08	2	US/LS	32500	0	5000	100	DIRTINESS	CLEAN	WEAR & TEAR
03	4.08	8	US	32000	300	10	10	DIRTINESS	CLEAN	WEAR & TEAR
04	4.08	9	US	25000	150	5000	10	DIRTINESS	CLEAN	WEAR & TEAR
05	4.08	1	US	43700	200	100	10	DIRTINESS	CLEAN	WEAR & TEAR
06	4.08	9	LS	28000	700	10	10	DIRTINESS	CLEAN	WEAR & TEAR
07	2.01	7	US/LS	5000	3500	3000	10	TRAILING EDGE PITTING	SAND, PAINT AND POLISH	WEAR & TEAR

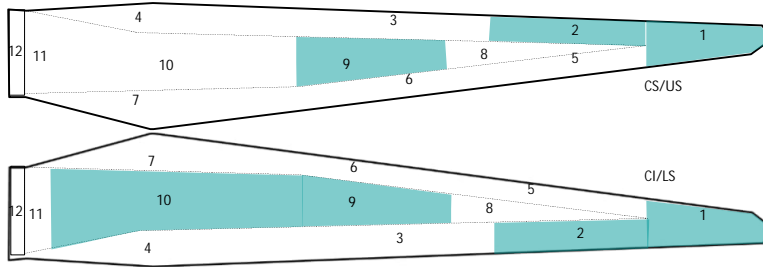


ZONES

- 1 TIP
- 2 TIP LEADING EDGE
- 3 MEDIUM LEADING EDGE
- 4 ROOT LEADING EDGE
- 5 TIP TRAILING EDGE
- 6 MEDIUM TRAILING EDGE
- 7 ROOT TRAILING EDGE
- 8 SPAR AREA TIP
- 9 SPAR AREA MEDIUM
- 10 SPAR AREA ROOT
- 11 ROOT
- 12 INTERIOR ROOT

BLADE C

DAMAGE N°	CODE	POSITION (mm)			DISTANCE (mm)			DESCRIPTION	WORK TO DO	BREAK CAUSE
		ZONE	SHELL	ROOT	LE	LENGTH	TRANS			
01	1.03	1	US/LS	43700	0	300	100	3M TAPE BROKEN	REPLACE 3M TAPE	WEAR & TEAR
02	4.08	2	US/LS	32500	0	2000	100	DIRTINESS	CLEAN	WEAR & TEAR
03	4.08	1	US	43700	200	100	10	DIRTINESS	CLEAN	WEAR & TEAR
04	4.08	9	US	28000	250	10	10	DIRTINESS	CLEAN	WEAR & TEAR
05	4.08	9	LS	28000	0	10	10	DIRTINESS	CLEAN	WEAR & TEAR
06	4.08	10	LS	20000	200	10	10	DIRTINESS	CLEAN	WEAR & TEAR

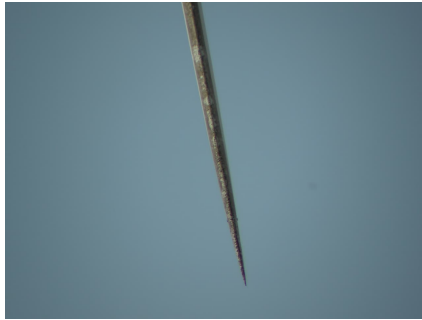


ZONES

- 1 TIP
- 2 TIP LEADING EDGE
- 3 MEDIUM LEADING EDGE
- 4 ROOT LEADING EDGE
- 5 TIP TRAILING EDGE
- 6 MEDIUM TRAILING EDGE
- 7 ROOT TRAILING EDGE
- 8 SPAR AREA TIP
- 9 SPAR AREA MEDIUM
- 10 SPAR AREA ROOT
- 11 ROOT
- 12 INTERIOR ROOT

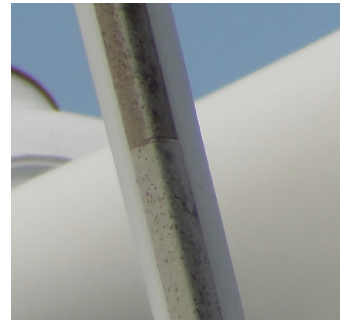
3. PHOTOS OF DAMAGES
BLADE A

DAMAGE N°	CODE	POSITION (mm)			DISTANCE (mm)			DESCRIPTION	WORK TO BE DONE	BREAK CAUSE
		ZONE	SHELL	ROOT	LE	LENGTH	TRANS			
01	1.03	1	US/LS	43700	0	400	100	3M TAPE BROKEN	REPLACE 3M TAPE	WEAR & TEAR



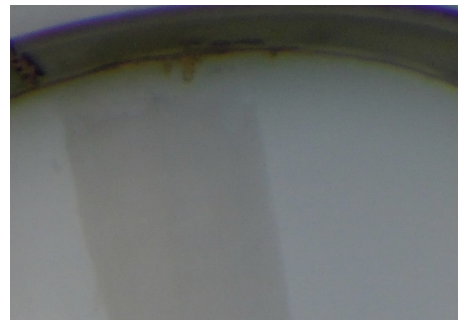
REMARK

DAMAGE N°	CODE	POSITION (mm)			DISTANCE (mm)			DESCRIPTION	WORK TO BE DONE	BREAK CAUSE
		ZONE	SHELL	ROOT	LE	LENGTH	TRANS			
02	4.08	2	US/LS	32500	0	5000	100	DIRTINESS	CLEAN	WEAR & TEAR



REMARK

DAMAGE N°	CODE	POSITION (mm)			DISTANCE (mm)			DESCRIPTION	WORK TO BE DONE	BREAK CAUSE
		ZONE	SHELL	ROOT	LE	LENGTH	TRANS			
03	4.08	4	US/LS	0	0	200	200	DIRTINESS	CLEAN	WEAR & TEAR



REMARK

3. PHOTOS OF DAMAGES
BLADE A

DAMAGE		POSITION (mm)			DISTANCE (mm)			DESCRIPTION	WORK TO BE DONE	BREAK CAUSE
N°	CODE	ZONE	SHELL	ROOT	LE	LENGTH	TRANS			
04	4.08	2	US	40000	200	10	10	DIRTINESS	CLEAN	WEAR & TEAR



REMARK

DAMAGE		POSITION (mm)			DISTANCE (mm)			DESCRIPTION	WORK TO BE DONE	BREAK CAUSE
N°	CODE	ZONE	SHELL	ROOT	LE	LENGTH	TRANS			
05	4.08	2	US	33000	150	10	10	DIRTINESS	CLEAN	WEAR & TEAR



REMARK

DAMAGE		POSITION (mm)			DISTANCE (mm)			DESCRIPTION	WORK TO BE DONE	BREAK CAUSE
N°	CODE	ZONE	SHELL	ROOT	LE	LENGTH	TRANS			
06	4.08	9	US	30000	500	5000	200	DIRTINESS	CLEAN	WEAR & TEAR



REMARK

3. PHOTOS OF DAMAGES
BLADE A

DAMAGE		POSITION (mm)			DISTANCE (mm)			DESCRIPTION	WORK TO BE DONE	BREAK CAUSE
N°	CODE	ZONE	SHELL	ROOT	LE	LENGTH	TRANS			
07	4.08	9	LS	28000	300	10	10	DIRTINESS	CLEAN	WEAR & TEAR



REMARK

DAMAGE		POSITION (mm)			DISTANCE (mm)			DESCRIPTION	WORK TO BE DONE	BREAK CAUSE
N°	CODE	ZONE	SHELL	ROOT	LE	LENGTH	TRANS			
08	2.01	7	US/LS	5000	3500	3000	10	TRAILING EDGE PITTING	SAND, PAINT AND POLISH	WEAR & TEAR



REMARK

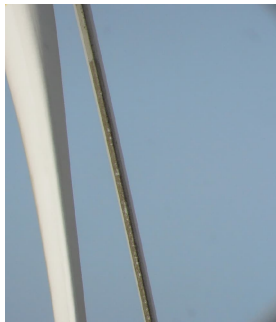
BLADE B

DAMAGE N°	CODE	POSITION (mm)			DISTANCE (mm)			DESCRIPTION	WORK TO BE DONE	BREAK CAUSE
		ZONE	SHELL	ROOT	LE	LENGTH	TRANS			
01	1.03	1	US/LS	43700	0	1000	100	3M TAPE BROKEN	REPLACE 3M TAPE	WEAR & TEAR



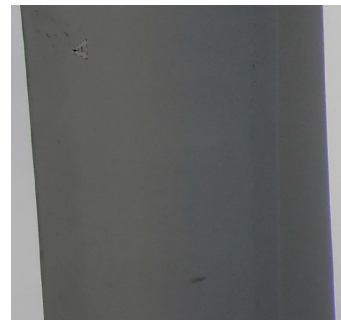
REMARK

DAMAGE N°	CODE	POSITION (mm)			DISTANCE (mm)			DESCRIPTION	WORK TO BE DONE	BREAK CAUSE
		ZONE	SHELL	ROOT	LE	LENGTH	TRANS			
02	4.08	2	US/LS	32500	0	5000	100	DIRTINESS	CLEAN	WEAR & TEAR



REMARK

DAMAGE N°	CODE	POSITION (mm)			DISTANCE (mm)			DESCRIPTION	WORK TO BE DONE	BREAK CAUSE
		ZONE	SHELL	ROOT	LE	LENGTH	TRANS			
03	4.08	8	US	32000	300	10	10	DIRTINESS	CLEAN	WEAR & TEAR



REMARK

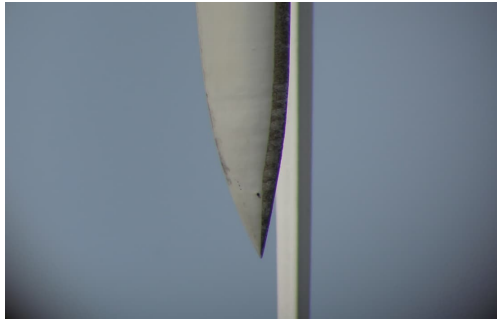
BLADE B

DAMAGE		POSITION (mm)			DISTANCE (mm)			DESCRIPTION	WORK TO BE DONE	BREAK CAUSE
N°	CODE	ZONE	SHELL	ROOT	LE	LENGTH	TRANS			
04	4.08	9	US	25000	150	5000	10	DIRTINESS	CLEAN	WEAR & TEAR



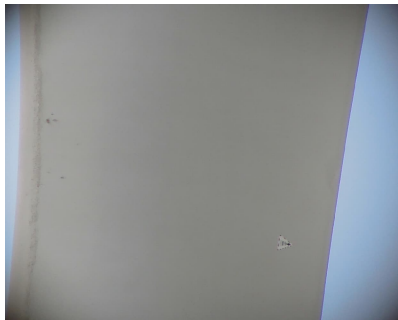
REMARK

DAMAGE		POSITION (mm)			DISTANCE (mm)			DESCRIPTION	WORK TO BE DONE	BREAK CAUSE
N°	CODE	ZONE	SHELL	ROOT	LE	LENGTH	TRANS			
05	4.08	1	US	43700	200	100	10	DIRTINESS	CLEAN	WEAR & TEAR



REMARK

DAMAGE		POSITION (mm)			DISTANCE (mm)			DESCRIPTION	WORK TO BE DONE	BREAK CAUSE
N°	CODE	ZONE	SHELL	ROOT	LE	LENGTH	TRANS			
06	4.08	9	LS	28000	700	10	10	DIRTINESS	CLEAN	WEAR & TEAR



REMARK

BLADE B

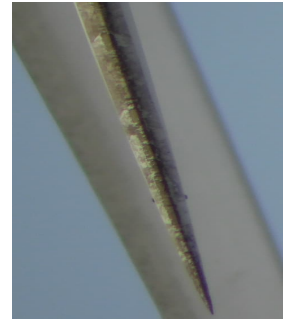
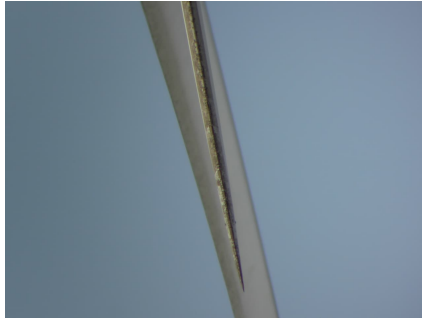
DAMAGE		POSITION (mm)			DISTANCE (mm)			DESCRIPTION	WORK TO BE DONE	BREAK CAUSE
N°	CODE	ZONE	SHELL	ROOT	LE	LENGTH	TRANS			
07	2.01	7	US/LS	5000	3500	3000	10	TRAILING EDGE PITTING	SAND, PAINT AND POLISH	WEAR & TEAR



REMARK

BLADE C

DAMAGE N°	CODE	POSITION (mm)			DISTANCE (mm)			DESCRIPTION	WORK TO BE DONE	BREAK CAUSE
		ZONE	SHELL	ROOT	LE	LENGTH	TRANS			
01	1.03	1	US/LS	43700	0	300	100	3M TAPE BROKEN	REPLACE 3M TAPE	WEAR & TEAR



REMARK

DAMAGE N°	CODE	POSITION (mm)			DISTANCE (mm)			DESCRIPTION	WORK TO BE DONE	BREAK CAUSE
		ZONE	SHELL	ROOT	LE	LENGTH	TRANS			
02	4.08	2	US/LS	32500	0	2000	100	DIRTINESS	CLEAN	WEAR & TEAR



REMARK

DAMAGE N°	CODE	POSITION (mm)			DISTANCE (mm)			DESCRIPTION	WORK TO BE DONE	BREAK CAUSE
		ZONE	SHELL	ROOT	LE	LENGTH	TRANS			
03	4.08	1	US	43700	200	100	10	DIRTINESS	CLEAN	WEAR & TEAR



REMARK

BLADE C

DAMAGE		POSITION (mm)			DISTANCE (mm)			DESCRIPTION	WORK TO BE DONE	BREAK CAUSE
N°	CODE	ZONE	SHELL	ROOT	LE	LENGTH	TRANS			
04	4.08	9	US	28000	250	10	10	DIRTINESS	CLEAN	WEAR & TEAR



REMARK

DAMAGE		POSITION (mm)			DISTANCE (mm)			DESCRIPTION	WORK TO BE DONE	BREAK CAUSE
N°	CODE	ZONE	SHELL	ROOT	LE	LENGTH	TRANS			
05	4.08	9	LS	28000	0	10	10	DIRTINESS	CLEAN	WEAR & TEAR



REMARK

DAMAGE		POSITION (mm)			DISTANCE (mm)			DESCRIPTION	WORK TO BE DONE	BREAK CAUSE
N°	CODE	ZONE	SHELL	ROOT	LE	LENGTH	TRANS			
06	4.08	10	LS	20000	200	10	10	DIRTINESS	CLEAN	WEAR & TEAR



REMARK



SIEMENS Gamesa

RENEWABLE ENERGY

BLADE INSPECTION REPORT



VALOREM

Sainte Rose T7

SIEMENS Gamesa Renewable Energy

GLOBAL OPERATIONS

Avda. Ciudad de la Innovación 2,
31621 Sarriguren (Navarra) - Spain

Ref.: INOMG-PL-REP-001-ES

Date: 05/11/2023



GLOBAL OPERATIONS

WIND FARM:	Sainte Rose
WTG:	T7
FL:	WF-FR-9711-1766-Y2-A-002
CLIENT:	VALOREM
WO N°	
SC	France
SC RESPONSIBLE	SEBASTIEN ENGERRAN
SUPERVISOR	WALID LAKHDAR DJEBBARA



1. DATA

1.1 WIND TURBINE DATA

WIND FARM	Sainte Rose
WTG N°	T7
WTG MODEL	G 90
CLIENT	VALOREM
COUNTRY	France
SERVICE CENTRE	France
PRODUCTION (kWh)	
LINE HOURS OK	
WTG HOURS OK	

1.2 INTERVENTION DATA

CRANE COMPANY	
START DATE	20/06/2023
END DATE	20/07/2023

	TECHNICIAN	CODE	COMPANY	CODE
1	WALID LAKHDAR DJEBBARA	5019128	SGRE	4
2			-	-
3			-	-
4			-	-

1.3 BLADE IDENTIFICATION

BLADE A

BLADE N°	001131-44.0P-53
BLADE WEIGHT (kg)	7253
MANUFACTURER	LM
BLADE FINISHED	YES

INTERVENTION TYPE

GROUND

BLADE B

BLADE N°	001132-44.0P-53
BLADE WEIGHT (kg)	7259
MANUFACTURER	LM
BLADE FINISHED	YES

INTERVENTION TYPE

GROUND

BLADE C

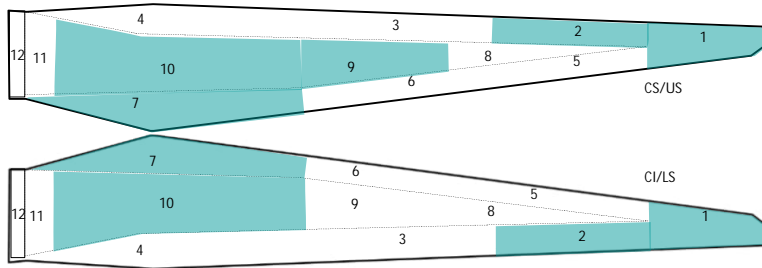
BLADE N°	001133-44.0P-53
BLADE WEIGHT (kg)	7239
MANUFACTURER	LM
BLADE FINISHED	YES

INTERVENTION TYPE

GROUND

2.DAMAGE IDENTIFICATION AND EVALUATION
BLADE A

DAMAGE N°	CODE	POSITION (mm)			DISTANCE (mm)			DESCRIPTION	WORK TO DO	BREAK CAUSE
		ZONE	SHELL	ROOT	LE	LENGTH	TRANS			
01	1.03	1	US/LS	40000	0	1000	100	3M TAPE BROKEN	REPLACE 3M TAPE	WEAR & TEAR
02	4.08	2	US/LS	38000	0	1000	100	DIRTINESS	CLEAN	WEAR & TEAR
03	4.08	10	US	7000	3500	500	200	DIRTINESS	CLEAN	WEAR & TEAR
04	4.08	9	US	28000	1000	3000	200	DIRTINESS	CLEAN	WEAR & TEAR
05	4.08	1	US	43700	200	10	10	DIRTINESS	CLEAN	WEAR & TEAR
06	4.08	10	LS	20000	300	10	10	DIRTINESS	CLEAN	WEAR & TEAR
07	4.08	1	LS	43700	10	10	10	DIRTINESS	CLEAN	WEAR & TEAR
08	2.01	7	US/LS	5000	3500	5000	10	TRAILING EDGE PITTING	SAND, PAINT AND POLISH	WEAR & TEAR

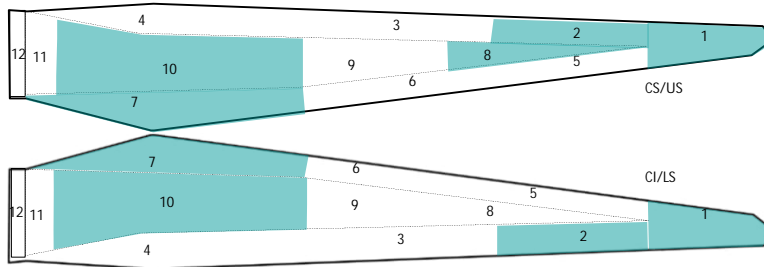


ZONES

- 1 TIP
- 2 TIP LEADING EDGE
- 3 MEDIUM LEADING EDGE
- 4 ROOT LEADING EDGE
- 5 TIP TRAILING EDGE
- 6 MEDIUM TRAILING EDGE
- 7 ROOT TRAILING EDGE
- 8 SPAR AREA TIP
- 9 SPAR AREA MEDIUM
- 10 SPAR AREA ROOT
- 11 ROOT
- 12 INTERIOR ROOT

BLADE B

N°	DAMAGE CODE	POSITION (mm)		DISTANCE (mm)			DESCRIPTION	WORK TO DO	BREAK CAUSE	
		ZONE	SHELL	ROOT	LE	LENGTH				TRANS
01	1.03	1	US/LS	43700	0	3000	140	3M TAPE BROKEN	REPLACE 3M TAPE	WEAR & TEAR
02	4.08	2	US/LS	35000	0	1000	140	DIRTINESS	CLEAN	WEAR & TEAR
03	4.08	10	US	7000	3500	300	300	DIRTINESS	CLEAN	WEAR & TEAR
04	4.08	8	US	28000	400	3000	600	DIRTINESS	CLEAN	WEAR & TEAR
05	4.08	1	US	43700	110	10	10	DIRTINESS	CLEAN	WEAR & TEAR
06	4.08	10	LS	3000	1500	10	400	DIRTINESS	CLEAN	WEAR & TEAR
07	4.08	10	LS	2000	200	10	10	DIRTINESS	CLEAN	WEAR & TEAR
08	4.08	1	LS	43700	110	10	10	DIRTINESS	CLEAN	WEAR & TEAR
09	2.01	7	US/LS	5000	3500	8000	10	TRAILING EDGE PITTING	SAND, PAINT AND POLISH	WEAR & TEAR

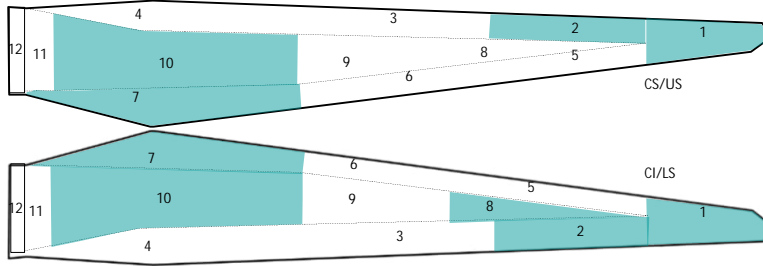


ZONES

- 1 TIP
- 2 TIP LEADING EDGE
- 3 MEDIUM LEADING EDGE
- 4 ROOT LEADING EDGE
- 5 TIP TRAILING EDGE
- 6 MEDIUM TRAILING EDGE
- 7 ROOT TRAILING EDGE
- 8 SPAR AREA TIP
- 9 SPAR AREA MEDIUM
- 10 SPAR AREA ROOT
- 11 ROOT
- 12 INTERIOR ROOT

BLADE C

DAMAGE N°	CODE	POSITION (mm)			DISTANCE (mm)			DESCRIPTION	WORK TO DO	BREAK CAUSE
		ZONE	SHELL	ROOT	LE	LENGTH	TRANS			
01	1.03	1	US/LS	43700	0	1000	100	3M TAPE BROKEN	REPLACE 3M TAPE	WEAR & TEAR
02	4.08	2	US/LS	38000	0	1000	140	DIRTINESS	CLEAN	WEAR & TEAR
03	4.08	10	US	25000	400	10	10	DIRTINESS	CLEAN	WEAR & TEAR
04	4.08	1	US	43700	110	10	10	DIRTINESS	CLEAN	WEAR & TEAR
05	4.08	8	LS	35000	300	10	150	DIRTINESS	CLEAN	WEAR & TEAR
06	4.08	10	LS	20000	200	10	10	DIRTINESS	CLEAN	WEAR & TEAR
07	2.01	7	US/LS	5000	3500	5000	10	TRAILING EDGE PITTING	SAND, PAINT AND POLISH	WEAR & TEAR



ZONES

- 1 TIP
- 2 TIP LEADING EDGE
- 3 MEDIUM LEADING EDGE
- 4 ROOT LEADING EDGE
- 5 TIP TRAILING EDGE
- 6 MEDIUM TRAILING EDGE
- 7 ROOT TRAILING EDGE
- 8 SPAR AREA TIP
- 9 SPAR AREA MEDIUM
- 10 SPAR AREA ROOT
- 11 ROOT
- 12 INTERIOR ROOT

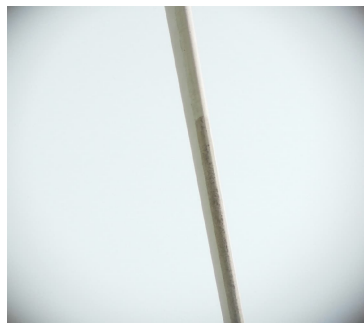
3. PHOTOS OF DAMAGES
BLADE A

DAMAGE N°	CODE	POSITION (mm)			DISTANCE (mm)			DESCRIPTION	WORK TO BE DONE	BREAK CAUSE
		ZONE	SHELL	ROOT	LE	LENGTH	TRANS			
01	1.03	1	US/LS	40000	0	1000	100	3M TAPE BROKEN	REPLACE 3M TAPE	WEAR & TEAR



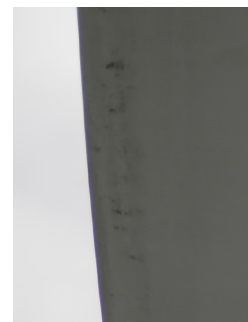
REMARK

DAMAGE N°	CODE	POSITION (mm)			DISTANCE (mm)			DESCRIPTION	WORK TO BE DONE	BREAK CAUSE
		ZONE	SHELL	ROOT	LE	LENGTH	TRANS			
02	4.08	2	US/LS	38000	0	1000	100	DIRTINESS	CLEAN	WEAR & TEAR



REMARK

DAMAGE N°	CODE	POSITION (mm)			DISTANCE (mm)			DESCRIPTION	WORK TO BE DONE	BREAK CAUSE
		ZONE	SHELL	ROOT	LE	LENGTH	TRANS			
03	4.08	10	US	7000	3500	500	200	DIRTINESS	CLEAN	WEAR & TEAR



REMARK

3. PHOTOS OF DAMAGES
BLADE A

DAMAGE		POSITION (mm)			DISTANCE (mm)			DESCRIPTION	WORK TO BE DONE	BREAK CAUSE
N°	CODE	ZONE	SHELL	ROOT	LE	LENGTH	TRANS			
04	4.08	9	US	28000	1000	3000	200	DIRTINESS	CLEAN	WEAR & TEAR



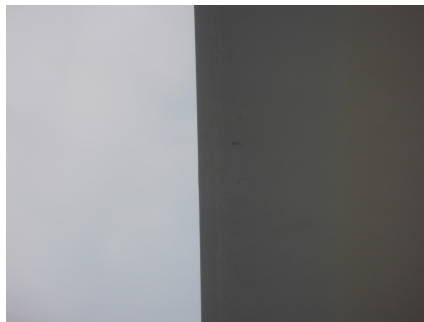
REMARK

DAMAGE		POSITION (mm)			DISTANCE (mm)			DESCRIPTION	WORK TO BE DONE	BREAK CAUSE
N°	CODE	ZONE	SHELL	ROOT	LE	LENGTH	TRANS			
05	4.08	1	US	43700	200	10	10	DIRTINESS	CLEAN	WEAR & TEAR



REMARK

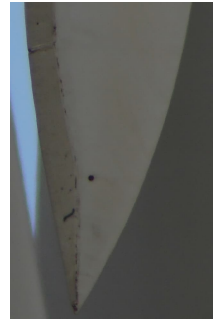
DAMAGE		POSITION (mm)			DISTANCE (mm)			DESCRIPTION	WORK TO BE DONE	BREAK CAUSE
N°	CODE	ZONE	SHELL	ROOT	LE	LENGTH	TRANS			
06	4.08	10	LS	20000	300	10	10	DIRTINESS	CLEAN	WEAR & TEAR



REMARK

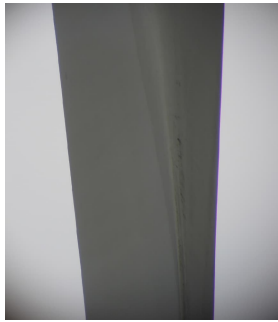
3. PHOTOS OF DAMAGES
BLADE A

DAMAGE		POSITION (mm)			DISTANCE (mm)			DESCRIPTION	WORK TO BE DONE	BREAK CAUSE
N°	CODE	ZONE	SHELL	ROOT	LE	LENGTH	TRANS			
07	4.08	1	LS	43700	10	10	10	DIRTINESS	CLEAN	WEAR & TEAR



REMARK

DAMAGE		POSITION (mm)			DISTANCE (mm)			DESCRIPTION	WORK TO BE DONE	BREAK CAUSE
N°	CODE	ZONE	SHELL	ROOT	LE	LENGTH	TRANS			
08	2.01	7	US/LS	5000	3500	5000	10	TRAILING EDGE PITTING	SAND, PAINT AND POLISH	WEAR & TEAR



REMARK

BLADE B

DAMAGE		POSITION (mm)			DISTANCE (mm)			DESCRIPTION	WORK TO BE DONE	BREAK CAUSE
N°	CODE	ZONE	SHELL	ROOT	LE	LENGTH	TRANS			
01	1.03	1	US/LS	43700	0	3000	140	3M TAPE BROKEN	REPLACE 3M TAPE	WEAR & TEAR



REMARK

DAMAGE		POSITION (mm)			DISTANCE (mm)			DESCRIPTION	WORK TO BE DONE	BREAK CAUSE
N°	CODE	ZONE	SHELL	ROOT	LE	LENGTH	TRANS			
02	4.08	2	US/LS	35000	0	1000	140	DIRTINESS	CLEAN	WEAR & TEAR



REMARK

DAMAGE		POSITION (mm)			DISTANCE (mm)			DESCRIPTION	WORK TO BE DONE	BREAK CAUSE
N°	CODE	ZONE	SHELL	ROOT	LE	LENGTH	TRANS			
03	4.08	10	US	7000	3500	300	300	DIRTINESS	CLEAN	WEAR & TEAR



REMARK

BLADE B

DAMAGE		POSITION (mm)			DISTANCE (mm)			DESCRIPTION	WORK TO BE DONE	BREAK CAUSE
N°	CODE	ZONE	SHELL	ROOT	LE	LENGTH	TRANS			
04	4.08	8	US	28000	400	3000	600	DIRTINESS	CLEAN	WEAR & TEAR



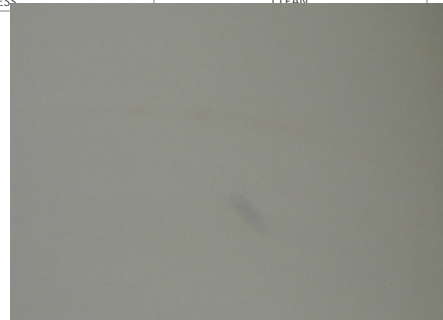
REMARK

DAMAGE		POSITION (mm)			DISTANCE (mm)			DESCRIPTION	WORK TO BE DONE	BREAK CAUSE
N°	CODE	ZONE	SHELL	ROOT	LE	LENGTH	TRANS			
05	4.08	1	US	43700	110	10	10	DIRTINESS	CLEAN	WEAR & TEAR



REMARK

DAMAGE		POSITION (mm)			DISTANCE (mm)			DESCRIPTION	WORK TO BE DONE	BREAK CAUSE
N°	CODE	ZONE	SHELL	ROOT	LE	LENGTH	TRANS			
06	4.08	10	LS	3000	1500	10	400	DIRTINESS	CLEAN	WEAR & TEAR



REMARK

BLADE B

DAMAGE		POSITION (mm)			DISTANCE (mm)			DESCRIPTION	WORK TO BE DONE	BREAK CAUSE
N°	CODE	ZONE	SHELL	ROOT	LE	LENGTH	TRANS			
07	4.08	10	LS	2000	200	10	10	DIRTINESS	CLEAN	WEAR & TEAR



REMARK

DAMAGE		POSITION (mm)			DISTANCE (mm)			DESCRIPTION	WORK TO BE DONE	BREAK CAUSE
N°	CODE	ZONE	SHELL	ROOT	LE	LENGTH	TRANS			
08	4.08	1	LS	43700	110	10	10	DIRTINESS	CLEAN	WEAR & TEAR



REMARK

DAMAGE		POSITION (mm)			DISTANCE (mm)			DESCRIPTION	WORK TO BE DONE	BREAK CAUSE
N°	CODE	ZONE	SHELL	ROOT	LE	LENGTH	TRANS			
09	2.01	7	US/LS	5000	3500	8000	10	TRAILING EDGE PITTING	SAND, PAINT AND POLISH	WEAR & TEAR



REMARK

BLADE C

DAMAGE		POSITION (mm)			DISTANCE (mm)			DESCRIPTION	WORK TO BE DONE	BREAK CAUSE
N°	CODE	ZONE	SHELL	ROOT	LE	LENGTH	TRANS			
01	1.03	1	US/LS	43700	0	1000	100	3M TAPE BROKEN	REPLACE 3M TAPE	WEAR & TEAR



REMARK

DAMAGE		POSITION (mm)			DISTANCE (mm)			DESCRIPTION	WORK TO BE DONE	BREAK CAUSE
N°	CODE	ZONE	SHELL	ROOT	LE	LENGTH	TRANS			
02	4.08	2	US/LS	38000	0	1000	140	DIRTINESS	CLEAN	WEAR & TEAR



REMARK

DAMAGE		POSITION (mm)			DISTANCE (mm)			DESCRIPTION	WORK TO BE DONE	BREAK CAUSE
N°	CODE	ZONE	SHELL	ROOT	LE	LENGTH	TRANS			
03	4.08	10	US	25000	400	10	10	DIRTINESS	CLEAN	WEAR & TEAR



REMARK

BLADE C

DAMAGE		POSITION (mm)			DISTANCE (mm)			DESCRIPTION	WORK TO BE DONE	BREAK CAUSE
N°	CODE	ZONE	SHELL	ROOT	LE	LENGTH	TRANS			
04	4.08	1	US	43700	110	10	10	DIRTINESS	CLEAN	WEAR & TEAR



REMARK

DAMAGE		POSITION (mm)			DISTANCE (mm)			DESCRIPTION	WORK TO BE DONE	BREAK CAUSE
N°	CODE	ZONE	SHELL	ROOT	LE	LENGTH	TRANS			
05	4.08	8	LS	35000	300	10	150	DIRTINESS	CLEAN	WEAR & TEAR



REMARK

DAMAGE		POSITION (mm)			DISTANCE (mm)			DESCRIPTION	WORK TO BE DONE	BREAK CAUSE
N°	CODE	ZONE	SHELL	ROOT	LE	LENGTH	TRANS			
06	4.08	10	LS	20000	200	10	10	DIRTINESS	CLEAN	WEAR & TEAR



REMARK

BLADE C

DAMAGE		POSITION (mm)			DISTANCE (mm)			DESCRIPTION	WORK TO BE DONE	BREAK CAUSE
N°	CODE	ZONE	SHELL	ROOT	LE	LENGTH	TRANS			
07	2.01	7	US/LS	5000	3500	5000	10	TRAILING EDGE PITTING	SAND, PAINT AND POLISH	WEAR & TEAR



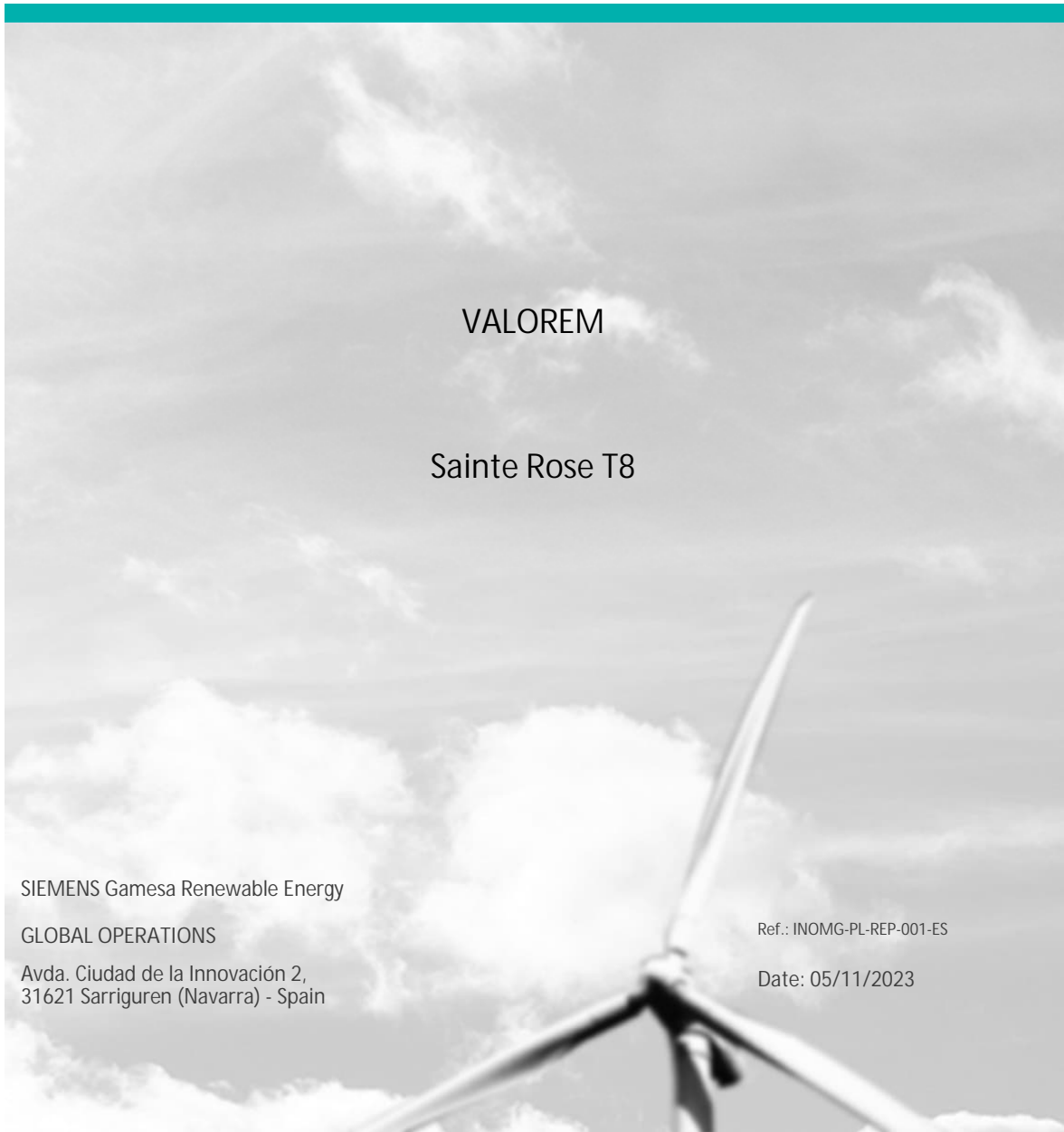
REMARK



SIEMENS Gamesa

RENEWABLE ENERGY

BLADE INSPECTION REPORT



VALOREM

Sainte Rose T8

SIEMENS Gamesa Renewable Energy

GLOBAL OPERATIONS

Avda. Ciudad de la Innovación 2,
31621 Sarriguren (Navarra) - Spain

Ref.: INOMG-PL-REP-001-ES

Date: 05/11/2023

GLOBAL OPERATIONS

WIND FARM:	Sainte Rose
WTG:	T8
FL:	WF-FR-9711-1766-Y2-A-001
CLIENT:	VALOREM
WO N°	
SC	France
SC RESPONSIBLE	SEBASTIEN ENGERRAN
SUPERVISOR	WALID LAKHDAR DJEBBARA



1. DATA

1.1 WIND TURBINE DATA

WIND FARM	Sainte Rose
WTG N°	T8
WTG MODEL	G 90
CLIENT	VALOREM
COUNTRY	France
SERVICE CENTRE	France
PRODUCTION (kWh)	
LINE HOURS OK	
WTG HOURS OK	

1.2 INTERVENTION DATA

CRANE COMPANY	
START DATE	20/06/2023
END DATE	20/06/2023

	TECHNICIAN	CODE	COMPANY	CODE
1	WALID LAKHDAR DJEBBARA	5019128	SGRE	4
2			-	-
3			-	-
4			-	-

1.3 BLADE IDENTIFICATION

BLADE A

BLADE N°	001134-440P-53
BLADE WEIGHT (kg)	7235
MANUFACTURER	LM
BLADE FINISHED	YES
INTERVENTION TYPE	GROUND

BLADE B

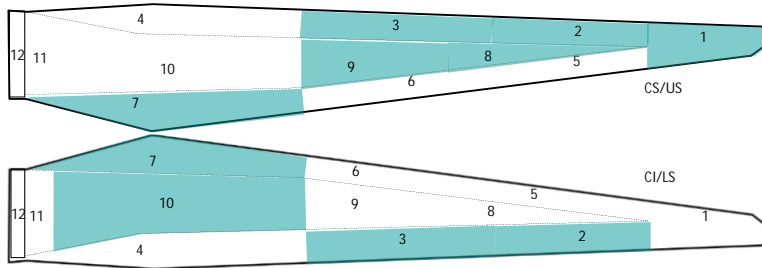
BLADE N°	001136-44.0P53
BLADE WEIGHT (kg)	7263
MANUFACTURER	LM
BLADE FINISHED	YES
INTERVENTION TYPE	GROUND

BLADE C

BLADE N°	001138- 44.0P 53
BLADE WEIGHT (kg)	7250
MANUFACTURER	LM
BLADE FINISHED	YES
INTERVENTION TYPE	GROUND

2.DAMAGE IDENTIFICATION AND EVALUATION
BLADE A

DAMAGE N°	CODE	POSITION (mm)		DISTANCE (mm)			DESCRIPTION	WORK TO DO	BREAK CAUSE	
		ZONE	SHELL	ROOT	LE	LENGTH				TRANS
01	4.08	3	US/LS	28000	0	10	10	DIRTINESS	CLEAN	WEAR & TEAR
02	4.08	3	US/LS	30000	0	50	10	DIRTINESS	CLEAN	WEAR & TEAR
03	4.08	2	US/LS	42000	0	10	10	DIRTINESS	CLEAN	WEAR & TEAR
04	4.08	1	US	43700	110	10	10	DIRTINESS	CLEAN	WEAR & TEAR
05	4.08	8	US	27000	1000	10	10	DIRTINESS	CLEAN	WEAR & TEAR
06	4.08	9	US	25000	1000	10	10	DIRTINESS	CLEAN	WEAR & TEAR
07	4.08	10	LS	3000	500	2000	2000	DIRTINESS	CLEAN	WEAR & TEAR
08	2.01	7	US/LS	3500	3500	5000	10	TRAILING EDGE PITTING	SAND, PAINT AND POLISH	WEAR & TEAR

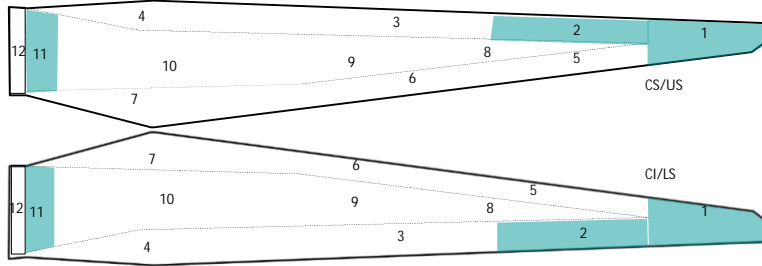


ZONES

- 1 TIP
- 2 TIP LEADING EDGE
- 3 MEDIUM LEADING EDGE
- 4 ROOT LEADING EDGE
- 5 TIP TRAILING EDGE
- 6 MEDIUM TRAILING EDGE
- 7 ROOT TRAILING EDGE
- 8 SPAR AREA TIP
- 9 SPAR AREA MEDIUM
- 10 SPAR AREA ROOT
- 11 ROOT
- 12 INTERIOR ROOT

BLADE B

DAMAGE N°	CODE	POSITION (mm)			DISTANCE (mm)			DESCRIPTION	WORK TO DO	BREAK CAUSE
		ZONE	SHELL	ROOT	LE	LENGTH	TRANS			
01	1.03	1	US/LS	43700	0	3000	100	3M TAPE BROKEN	REPLACE 3M TAPE	WEAR & TEAR
02	4.08	2	US/LS	38000	0	2000	100	DIRTINESS	CLEAN	WEAR & TEAR
03	4.08	1	US	43700	110	10	10	DIRTINESS	CLEAN	WEAR & TEAR
04	4.08	2	US	38000	200	50	10	DIRTINESS	CLEAN	WEAR & TEAR
05	4.08	11	US	0	1000	10	10	DIRTINESS	CLEAN	WEAR & TEAR
06	4.08	2	LS	36000	600	10	10	DIRTINESS	CLEAN	WEAR & TEAR
07	4.08	11	US/LS	0	3500	10	10	DIRTINESS	CLEAN	WEAR & TEAR

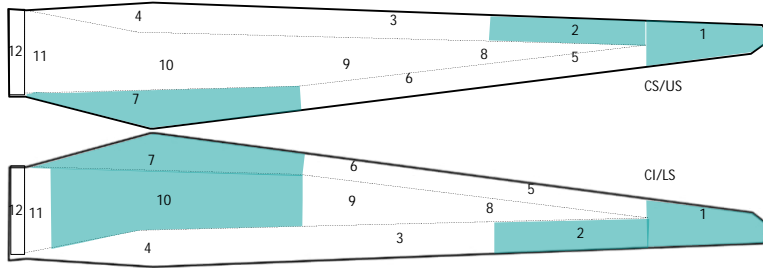


ZONES

- 1 TIP
- 2 TIP LEADING EDGE
- 3 MEDIUM LEADING EDGE
- 4 ROOT LEADING EDGE
- 5 TIP TRAILING EDGE
- 6 MEDIUM TRAILING EDGE
- 7 ROOT TRAILING EDGE
- 8 SPAR AREA TIP
- 9 SPAR AREA MEDIUM
- 10 SPAR AREA ROOT
- 11 ROOT
- 12 INTERIOR ROOT

BLADE C

DAMAGE N°	CODE	POSITION (mm)		DISTANCE (mm)			DESCRIPTION	WORK TO DO	BREAK CAUSE	
		ZONE	SHELL	ROOT	LE	LENGTH				TRANS
01	1.03	1	US/LS	42000	0	2000	100	3M TAPE BROKEN	REPLACE 3M TAPE	WEAR & TEAR
02	1.03	2	US/LS	38000	0	10	10	3M TAPE BROKEN	REPLACE 3M TAPE	WEAR & TEAR
03	4.08	2	US/LS	35000	0	1000	100	DIRTINESS	CLEAN	WEAR & TEAR
04	4.08	1	US	43700	110	10	10	DIRTINESS	CLEAN	WEAR & TEAR
05	4.08	10	LS	18000	150	10	10	DIRTINESS	CLEAN	WEAR & TEAR
06	4.08	1	LS	43700	110	10	10	DIRTINESS	CLEAN	WEAR & TEAR
07	2.01	7	US/LS	3500	3500	3000	10	TRAILING EDGE PITTING	SAND, PAINT AND POLISH	WEAR & TEAR



ZONES

- 1 TIP
- 2 TIP LEADING EDGE
- 3 MEDIUM LEADING EDGE
- 4 ROOT LEADING EDGE
- 5 TIP TRAILING EDGE
- 6 MEDIUM TRAILING EDGE
- 7 ROOT TRAILING EDGE
- 8 SPAR AREA TIP
- 9 SPAR AREA MEDIUM
- 10 SPAR AREA ROOT
- 11 ROOT
- 12 INTERIOR ROOT

3. PHOTOS OF DAMAGES
BLADE A

DAMAGE		POSITION (mm)			DISTANCE (mm)			DESCRIPTION	WORK TO BE DONE	BREAK CAUSE
N°	CODE	ZONE	SHELL	ROOT	LE	LENGTH	TRANS			
01	4.08	3	US/LS	28000	0	10	10	DIRTINESS	CLEAN	WEAR & TEAR



REMARK

DAMAGE		POSITION (mm)			DISTANCE (mm)			DESCRIPTION	WORK TO BE DONE	BREAK CAUSE
N°	CODE	ZONE	SHELL	ROOT	LE	LENGTH	TRANS			
02	4.08	3	US/LS	30000	0	50	10	DIRTINESS	CLEAN	WEAR & TEAR



REMARK

DAMAGE		POSITION (mm)			DISTANCE (mm)			DESCRIPTION	WORK TO BE DONE	BREAK CAUSE
N°	CODE	ZONE	SHELL	ROOT	LE	LENGTH	TRANS			
03	4.08	2	US/LS	42000	0	10	10	DIRTINESS	CLEAN	WEAR & TEAR



REMARK

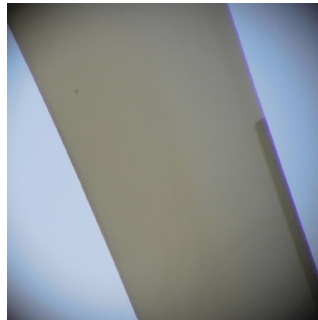
3. PHOTOS OF DAMAGES
BLADE A

DAMAGE N°	CODE	POSITION (mm)			DISTANCE (mm)			DESCRIPTION	WORK TO BE DONE	BREAK CAUSE
		ZONE	SHELL	ROOT	LE	LENGTH	TRANS			
04	4.08	1	US	43700	110	10	10	DIRTINESS	CLEAN	WEAR & TEAR



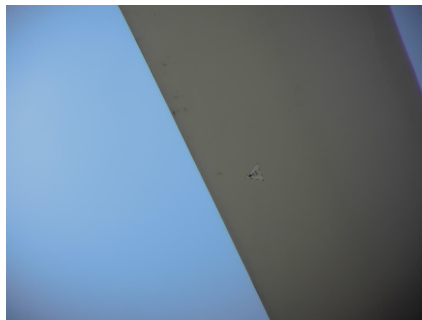
REMARK

DAMAGE N°	CODE	POSITION (mm)			DISTANCE (mm)			DESCRIPTION	WORK TO BE DONE	BREAK CAUSE
		ZONE	SHELL	ROOT	LE	LENGTH	TRANS			
05	4.08	8	US	27000	1000	10	10	DIRTINESS	CLEAN	WEAR & TEAR



REMARK

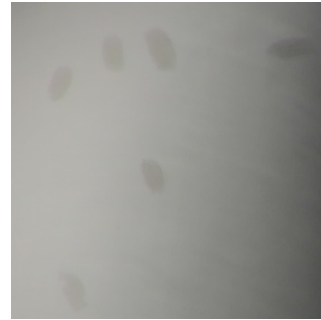
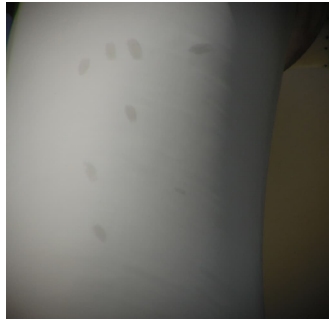
DAMAGE N°	CODE	POSITION (mm)			DISTANCE (mm)			DESCRIPTION	WORK TO BE DONE	BREAK CAUSE
		ZONE	SHELL	ROOT	LE	LENGTH	TRANS			
06	4.08	9	US	25000	1000	10	10	DIRTINESS	CLEAN	WEAR & TEAR



REMARK

3. PHOTOS OF DAMAGES
BLADE A

DAMAGE		POSITION (mm)			DISTANCE (mm)			DESCRIPTION	WORK TO BE DONE	BREAK CAUSE
N°	CODE	ZONE	SHELL	ROOT	LE	LENGTH	TRANS			
07	4.08	10	LS	3000	500	2000	2000	DIRTINESS	CLEAN	WEAR & TEAR



REMARK

DAMAGE		POSITION (mm)			DISTANCE (mm)			DESCRIPTION	WORK TO BE DONE	BREAK CAUSE
N°	CODE	ZONE	SHELL	ROOT	LE	LENGTH	TRANS			
08	2.01	7	US/LS	3500	3500	5000	10	TRAILING EDGE PITTING	SAND, PAINT AND POLISH	WEAR & TEAR



REMARK

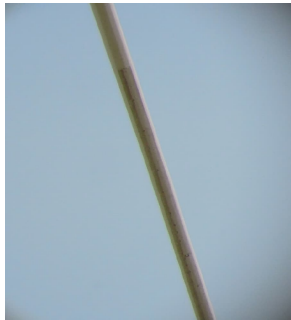
BLADE B

DAMAGE N°	CODE	POSITION (mm)			DISTANCE (mm)			DESCRIPTION	WORK TO BE DONE	BREAK CAUSE
		ZONE	SHELL	ROOT	LE	LENGTH	TRANS			
01	1.03	1	US/LS	43700	0	3000	100	3M TAPE BROKEN	REPLACE 3M TAPE	#j VALOR!



REMARK

DAMAGE N°	CODE	POSITION (mm)			DISTANCE (mm)			DESCRIPTION	WORK TO BE DONE	BREAK CAUSE
		ZONE	SHELL	ROOT	LE	LENGTH	TRANS			
02	4.08	2	US/LS	38000	0	2000	100	DIRTINESS	CLEAN	#j VALOR!



REMARK

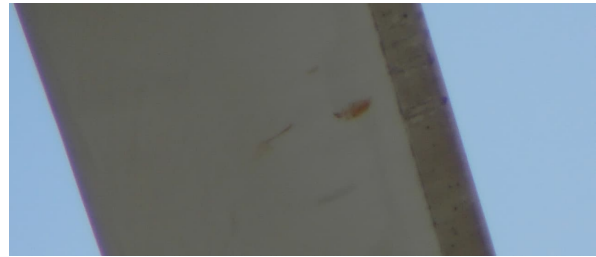
DAMAGE N°	CODE	POSITION (mm)			DISTANCE (mm)			DESCRIPTION	WORK TO BE DONE	BREAK CAUSE
		ZONE	SHELL	ROOT	LE	LENGTH	TRANS			
03	4.08	1	US	43700	110	10	10	DIRTINESS	CLEAN	#j VALOR!



REMARK

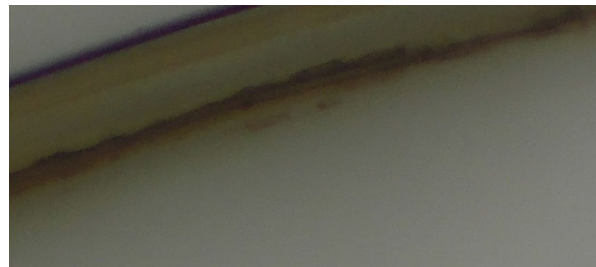
BLADE B

DAMAGE		POSITION (mm)			DISTANCE (mm)			DESCRIPTION	WORK TO BE DONE	BREAK CAUSE
N°	CODE	ZONE	SHELL	ROOT	LE	LENGTH	TRANS			
04	4.08	2	US	38000	200	50	10	DIRTINESS	CLEAN	# VALOR!



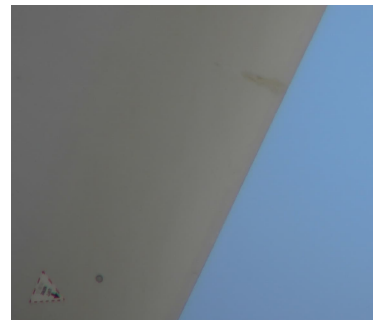
REMARK

DAMAGE		POSITION (mm)			DISTANCE (mm)			DESCRIPTION	WORK TO BE DONE	BREAK CAUSE
N°	CODE	ZONE	SHELL	ROOT	LE	LENGTH	TRANS			
05	4.08	11	US	0	1000	10	10	DIRTINESS	CLEAN	# VALOR!



REMARK

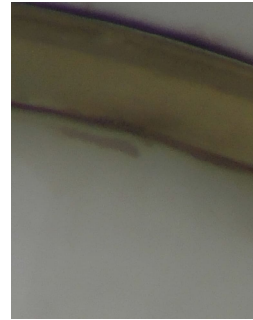
DAMAGE		POSITION (mm)			DISTANCE (mm)			DESCRIPTION	WORK TO BE DONE	BREAK CAUSE
N°	CODE	ZONE	SHELL	ROOT	LE	LENGTH	TRANS			
06	4.08	2	LS	36000	600	10	10	DIRTINESS	CLEAN	# VALOR!



REMARK

BLADE B

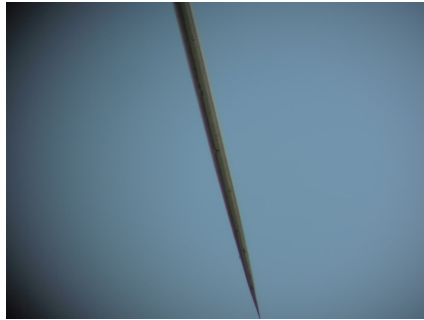
DAMAGE		POSITION (mm)			DISTANCE (mm)			DESCRIPTION	WORK TO BE DONE	BREAK CAUSE
N°	CODE	ZONE	SHELL	ROOT	LE	LENGTH	TRANS			
07	4.08	11	US/LS	0	3500	10	10	DIRTINESS	CLEAN	#jVALORI



REMARK

BLADE C

DAMAGE N°	CODE	POSITION (mm)			DISTANCE (mm)			DESCRIPTION	WORK TO BE DONE	BREAK CAUSE
		ZONE	SHELL	ROOT	LE	LENGTH	TRANS			
01	1.03	1	US/LS	42000	0	2000	100	3M TAPE BROKEN	REPLACE 3M TAPE	WEAR & TEAR



REMARK

DAMAGE N°	CODE	POSITION (mm)			DISTANCE (mm)			DESCRIPTION	WORK TO BE DONE	BREAK CAUSE
		ZONE	SHELL	ROOT	LE	LENGTH	TRANS			
02	1.03	2	US/LS	38000	0	10	10	3M TAPE BROKEN	REPLACE 3M TAPE	WEAR & TEAR



REMARK

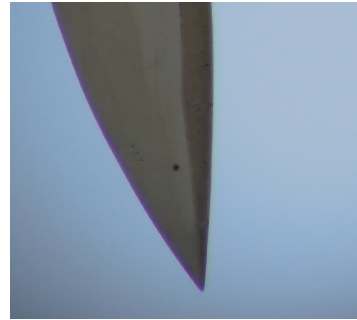
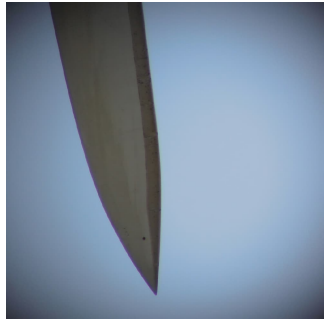
DAMAGE N°	CODE	POSITION (mm)			DISTANCE (mm)			DESCRIPTION	WORK TO BE DONE	BREAK CAUSE
		ZONE	SHELL	ROOT	LE	LENGTH	TRANS			
03	4.08	2	US/LS	35000	0	1000	100	DIRTINESS	CLEAN	WEAR & TEAR



REMARK

BLADE C

DAMAGE		POSITION (mm)			DISTANCE (mm)			DESCRIPTION	WORK TO BE DONE	BREAK CAUSE
N°	CODE	ZONE	SHELL	ROOT	LE	LENGTH	TRANS			
04	4.08	1	US	43700	110	10	10	DIRTINESS	CLEAN	WEAR & TEAR



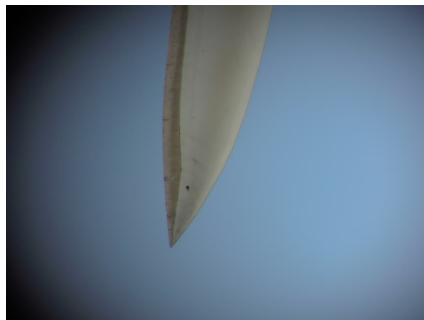
REMARK

DAMAGE		POSITION (mm)			DISTANCE (mm)			DESCRIPTION	WORK TO BE DONE	BREAK CAUSE
N°	CODE	ZONE	SHELL	ROOT	LE	LENGTH	TRANS			
05	4.08	10	LS	18000	150	10	10	DIRTINESS	CLEAN	WEAR & TEAR



REMARK

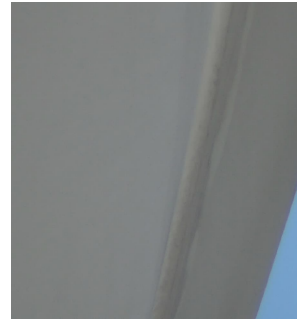
DAMAGE		POSITION (mm)			DISTANCE (mm)			DESCRIPTION	WORK TO BE DONE	BREAK CAUSE
N°	CODE	ZONE	SHELL	ROOT	LE	LENGTH	TRANS			
06	4.08	1	LS	43700	110	10	10	DIRTINESS	CLEAN	WEAR & TEAR



REMARK

BLADE C

DAMAGE		POSITION (mm)			DISTANCE (mm)			DESCRIPTION	WORK TO BE DONE	BREAK CAUSE
N°	CODE	ZONE	SHELL	ROOT	LE	LENGTH	TRANS			
07	2.01	7	US/LS	3500	3500	3000	10	TRAILING EDGE PITTING	SAND, PAINT AND POLISH	WEAR & TEAR



REMARK